

Mari-sol table base ø96,5 h:50cm

by Eugeni Quitllet

The collection, designed by Eugeni Quitllet, combines advanced technology and captivating design. Mari-Sol adapts perfectly to any environment, whether on an urban terrace or in a garden by the sea. Its elegant shape and versatile character make it the ideal piece to embellish and optimize both indoor and outdoor spaces.



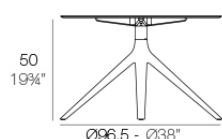
Info

Description

Extruded aluminum tube with cast aluminum base coated with epoxy baked painting. Item suitable for indoor and outdoor use. Table top not included.

Weight: 4.01 Kg

BASE 4 LEGS - BASE 4 PATAS



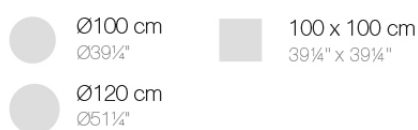
fixed top / fijo ref: 65033

fixed for glass / fijo para vidrio ref: 65033V

MARI-SOL BASE MESA Ø96'5 H50

MARI-SOL TABLE BASE Ø38" H19 3/4"

TABLE TOPS OPTIONS - OPCIONES SOBRES



Finishes

finishes

ALUMINIUM BASE

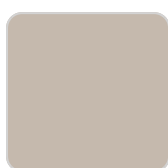
Ref. 65033V



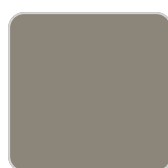
white



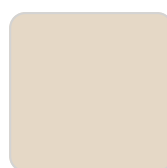
smoked



ecru



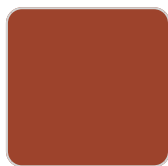
tortora



cream



camel



clay



garnet



brown



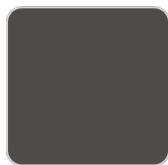
green



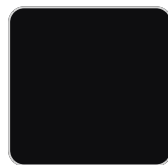
blue



gray



anthracite



black



ocean

Powder coated aluminum base with non collapsable aluminum attachment powder coated, made exclusively for our glass tops.

