

## Brooklyn chair with armrests

by Eugeni Quitllet

The Brooklyn furniture collection, designed by Eugeni Quitllet, is an invitation to rediscover the metropolitan essence in every line and curve. Inspired by the architecture of New York's iconic bridge, Brooklyn combines contemporary elegance with an urban edge that connects past, present and future in any environment. Brooklyn is today, yesterday and tomorrow.



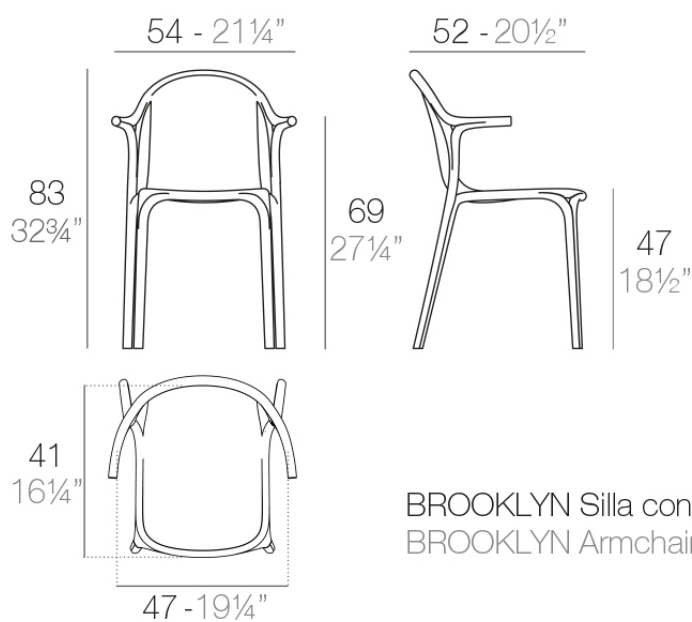
## Info

---

### Description

Made from polypropylene and reinforced with fiberglass manufactured by gas injection. Stackable . Available in various colors. Suitable for indoor and outdoor use.

Weight: 4.98 Kg



BROOKLYN Silla con brazos  
BROOKLYN Armchair

## Finishes

---

### finishes

---

Basic

Ref. 65038



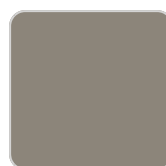
white



black



ecru



tortora

Available in various colors

VONDOM REVOLUTION

Ref. 65038VR

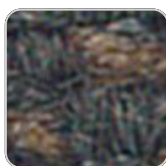
Recycled polypropylene from fishing nets, recycled plastic from the Balearic Islands and bottles collected from our seas.

### fabric

---

BAIONA

Ref. 65037CO



black 10114 baiona



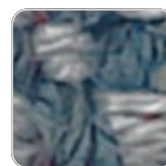
clay 10106 baiona



gray 10113 baiona



camel 10104 baiona



blue 10112 baiona

# VONDOM



cream 10103 baiona



ocean 10111 baiona



tortora 10102 baiona



green 10110 baiona



ecru 10101 baiona



jade 10109 baiona



white 10100 baiona



brown 10108 baiona



garnet 10107 baiona

Group 1C. High density 100% acrylic fabric, which provides a solid feel. It has an irregular pattern that adds a handcrafted touch.

## CALELLA

Ref. 65037CO



blue 10127 calella



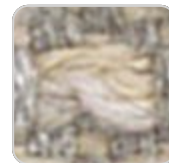
jade 10126 calella



clay 10125 calella



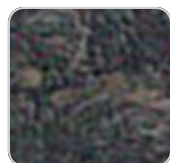
mustard 10124 calella



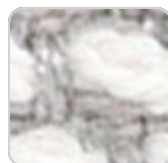
cream 10123 calella



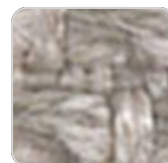
tortora 10122 calella



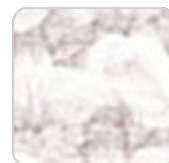
anthracite 10129  
calella



ecru 10121 calella



gray 10128 calella



white 10120 calella

Group 1C. PFAS-free 100% acrylic fabric with a rich and unusual texture and an exceptional softness, which enhances the comfort of the furniture.

## FISTERRA

Ref. 65037CO

# VONDOM



cream 10132 fisterra



white 10130 fisterra



ecru 10131 fisterra



tortora 10135 fisterra



camel 10134 fisterra



peach 10146 fisterra



clay 10137 fisterra



garnet 10138 fisterra



brown 10136 fisterra



olive 10145 fisterra



jade 10139 fisterra



green 10140 fisterra



ocean 10141 fisterra



blue 10142 fisterra



gray 10143 fisterra



anthracite 10144  
fisterra



black 10147 fisterra

Group 1C. 100% acrylic fabric, with a distinctive irregular marbled pattern and a soft feel.

## PORTONOVO

Ref. 65037CO



blue 10162 portonovo



camel 10154  
portonovo



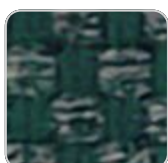
cream 10153  
portonovo



ocean 10161  
portonovo



tortora 10152  
portonovo



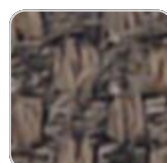
green 10160  
portonovo



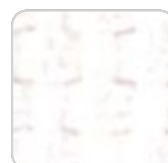
ecru 10151 portonovo



jade 10159 portonovo



brown 10158  
portonovo



white 10150  
portonovo

# VONDOM



black 10165  
portonovo



garnet 10157  
portonovo



anthracite 10164  
portonovo



clay 10156 portonovo



gray 10163 portonovo



mustard 10155  
portonovo

Group 1A. 100% acrylic fabric, with a flat and simple design, which adapts to any decorative style.

## ALTEA

Ref. 65037CO



tortora 1102 altea



white 1100 altea



camel 1120 altea



clay 1122 altea



garnet 1106 altea



brown 1104 altea



jade 1125 altea



ocean 1123 altea



gray 1101 altea



anthracite 1124 altea



black 1105 altea

Group 1A. Soft outdoor fabric with leather-like texture.

## AROUSA

Ref. 65037CO

# VONDOM



tortora 1209 arousa



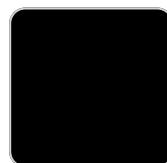
camel 1230 arousa



clay 1231 arousa



brown 1214 arousa



jade 1235 arousa



gray 1208 arousa



anthracite 1210  
arousa

Group 1B. Soft outdoor fabric with shiny finish.

## Ambients

---

