

## Suave planter ø55x100 cm

by Marcel Wanders

The Suave in&out furniture collection, designed by Marcel Wanders for Vondom, blurs the boundaries between indoors and outdoors, achieving a superior level of softness, comfort and relaxation. With innovative design and high quality materials, Suave transforms any space into a cosy and elegant oasis.



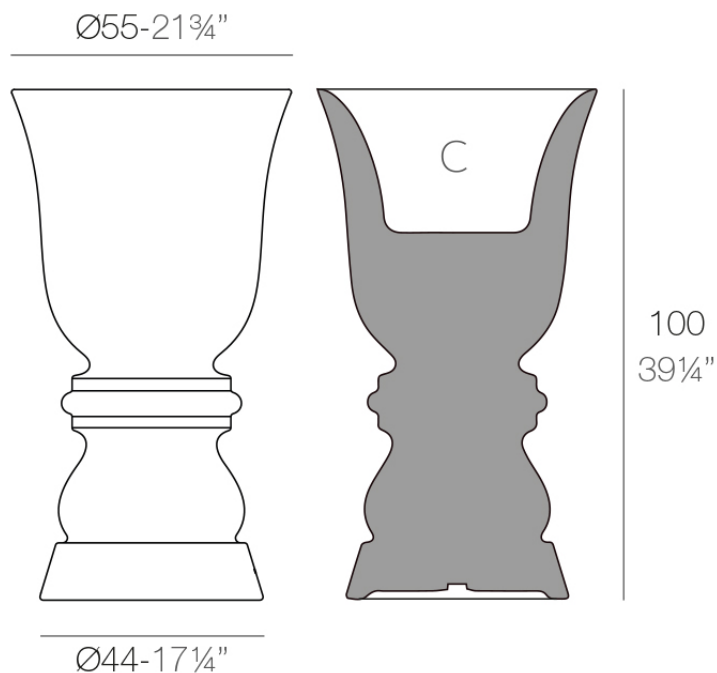
## Info

---

### Description

Pot made of polyethylene resin by rotational moulding. 100% Recyclable. Item suitable for indoor and outdoor use. Available in different finishes.

Weight: 10.7 Kg



SUAVE Macetero 100 cm  
SUAVE Planter 39 1/4"

C = 82 L  
C = 21 3/4 gal

## Finishes

---

### finishes

---

#### Basic

Ref. 67012A



white 2001



black 2002



ecru 2003



tortora 2004



gray 2005



anthracite 2006



brown 2008



garnet 2015



green 2016



cream 2017



blue 2018



camel 2020



clay 2022



ecru granite



cream granite



ice 2101

#### Matt Polyethylene

#### Self-Watering

Ref. 67012R

# VONDOM



white 2001



black 2002



ecru 2003



tortora 2004



gray 2005



anthracite 2006



brown 2008



garnet 2015



green 2016



cream 2017



blue 2018



camel 2020



clay 2022



ecru granite



cream granite



ice 2101

Self-watering system included in all planters except those with basic finish

Lacquered  
Ref. 67012RF



white 3101



black 3102



ecru 3103



tortora 3104



gray 3105



anthracite 3106



garnet 3113



green 3116



cream 3117



blue 3118

# VONDOM



camel 3120



clay



brown 3125

Lacquered Polyethylene

## lighting

---

Led – White  
Ref. 67012W



ice 2101

White internally lit unit with LED technology. Available only in matte ice white finish.

LED RGBW – Cable  
Ref. 67012L



ice 2101

Unit with internal lighting with RGBW LED technology and remote control unit for switching colors. Available only in matte ice white finish. Remote control included.

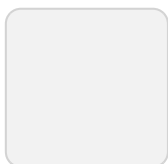
LED RGBW – Battery  
Ref. 67012Y



ice 2101

Unit with internal lighting with battery-powered RGBW LED technology. Includes charger and remote control for switching colors and charger. Available only in matte ice white finish.

LED RGBW DMX – Battery  
Ref. 67012DY



ice 2101

Unit with internal lighting with RGBW LED technology and remote control unit for switching colors. Also controlled by DMX-1024 (wireless), enabling communication between one or more products simultaneously via the DMX transmitter (not included). There are two options to choose from: Professional XLR DMX and Home WIFI DMX. (Remote control included).

## plato

---

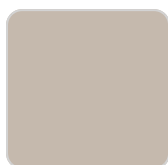
Ref. 42763



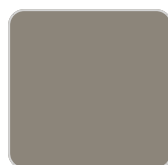
white 2001



black 2002



ecru 2003



tortora 2004



gray 2005

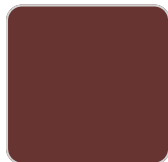
# VONDOM



anthracite 2006



brown 2008



garnet 2015



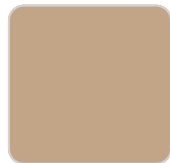
green 2016



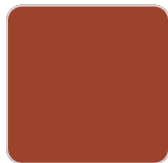
cream 2017



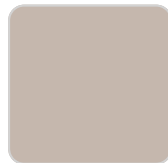
blue 2018



camel 2020



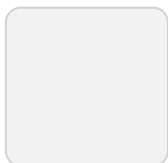
clay 2022



ecru granite



cream granite



ice 2101

## Ambients

---

