

Pasadena daybed

by Jean-Marie Massaud

‘The ambition of Pasadena is to reinterpret an archetype, to make an architectural product with this language and proportions, but generous in terms of comfort’. The complicity between Jean-Marie Massaud and Vondom beats strongly in Pasadena, a proposal that combines serenity and warmth. The result can be seen at a glance: soft profiles, balanced proportions and a comfort that invites you to let go from the very first moment.

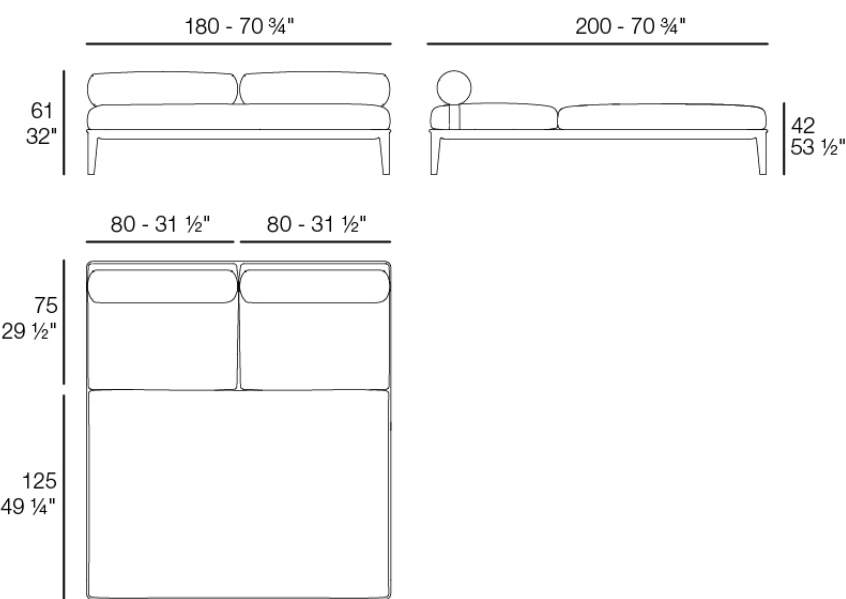
Coming soon.



Info

Description

Weight: 80.25 Kg



PASADENA Daybed
PASADENA Daybed
Ref. 70074

Finishes

finishes

ALUMINIUM

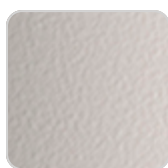
Ref. 70074



white



smoked



ecru



tortora



cream



camel



clay



garnet



brown



green



blue



gray



anthracite



black



ocean

Lacquered aluminium profile.

