

High cone pot ø30x39

The most extensive collection of indoor and outdoor planters designed by Studio Vondom. Timeless and minimalist designs that allow you to create unique and original atmospheres for homes, restaurants and any space.

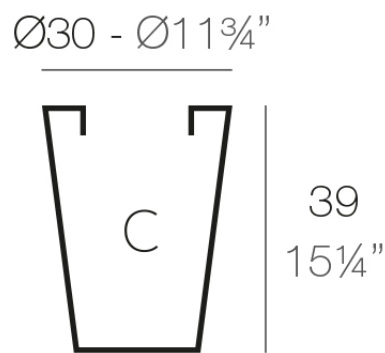


Info

Description

Pot made of polyethylene resin by rotational moulding. 100% Recyclable. Item suitable for indoor and outdoor use. Available in different finishes.

Weight: 0.6 Kg



$\text{Ø}19 - \text{Ø}7\frac{1}{2}"$

CONO ALTO $\text{Ø}30$

HIGH CONE $\text{Ø}11\frac{3}{4}"$

C = 20 L

C = $5\frac{1}{4}$ gal

Finishes

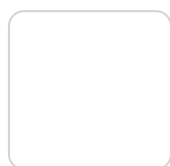
finishes

SIMPLE

Ref. 40530



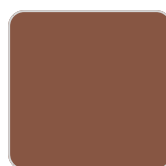
purjai red



white



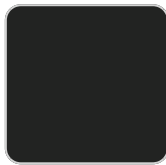
black



bronze



steel



anthracite



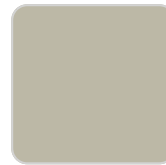
red



khaki



taupe



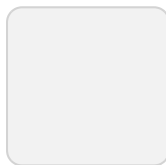
ecru



beige



orange



ice



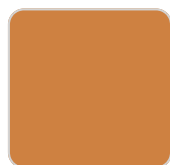
notte blue



crema



green



terracota

Matt finishes pot one wall

LACQUERED

Ref. 40530F

VONDOM



modo green



purjai red



white



black



bronze



steel



anthracite



champany



red



khaki



taupe



ecru



beige

Lacquered Polyethylene

