

Vases table 210x100x73

by JM Ferrero

VASES Collection, is made up of flowerpots, furniture and lighting designed by the Valencian designer JM Ferrero. It's shapes were inspired by diamond cutting, producing pieces of clear-cut shapes and great style, creating a big visual impact.

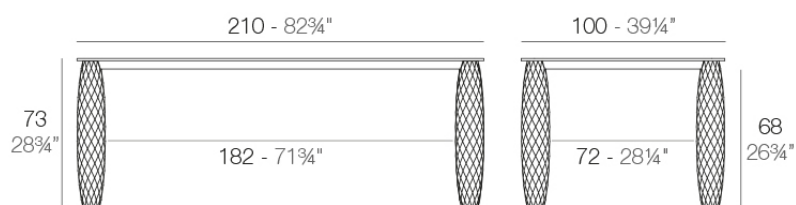


Info

Description

Made of polyethylene resin by rotational moulding. 100% Recyclable. Item suitable for indoor and outdoor use. Available in different finishes.

Weight: 54.31 Kg



VASES Mesa 210x100
VASES Dinning Table 82 3/4"x39 1/4"

Finishes

finishes

LACQUERED

Ref. 47079F



notte blue



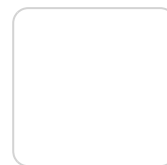
crema



modo green



purjai red



white



black



bronze



steel



anthracite



champany



red



khaki



taupe



ecru



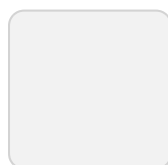
beige

Lacquered Polyethylene

tabletops

HPL

Ref. 47079



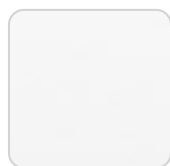
VONDOM

green



notte blue

crema



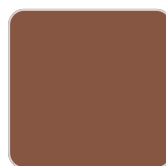
white

ice



black

purjai red



bronze

orange



steel



anthracite



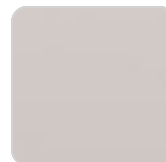
red



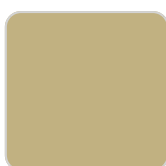
khaki



taupe



ecru



beige

HPL black edge

Ambients

