

## Faz table 200x100x72

by Ramón Esteve

Vondom's Faz collection, designed by Ramón Esteve, is one of the firm's most iconic collections. It stands out for its modular design and sophistication, representing harmony, serenity and timelessness through mineral and emphatic shapes. Faz transforms environments with its unique combination of material and light, creating an enveloping and exclusive atmosphere.



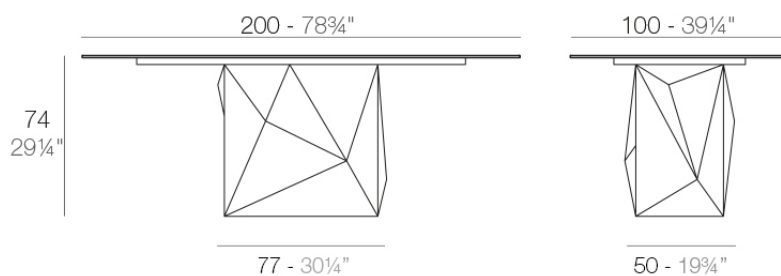
## Info

---

### Description

Made of polyethylene resin by rotational moulding. 100% Recyclable. Item suitable for indoor and outdoor use. Available in different finishes.

Weight: 100.15 Kg



FAZ Mesa 200 x 100  
FAZ Dining Table 78 $\frac{3}{4}$ " x 39 $\frac{1}{4}$ "

## Finishes

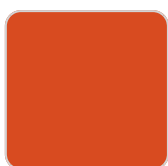
---

### finishes

---

#### BASIC

Ref. 54016B



orange



white 201



ecru 2003



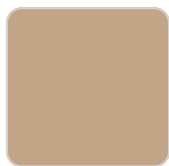
tortora 2004



gray 2005



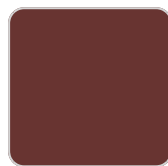
cream 2017



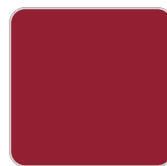
camel 2020



clay 2022



garnet 2015



red



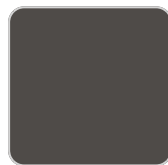
brown 2008



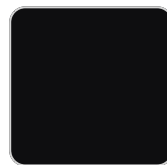
green 2016



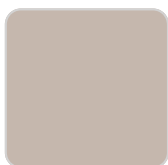
blue 2018



anthracite 2006



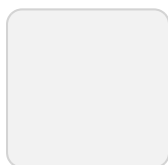
black 2002



ecru granite



cream granite



ice 2101



khaki



beige

#### Matt Polyethylene

#### LACQUERED

Ref. 54016F



white 3101



ecru 3103



tortora 3104



cream 3117



garnet 3113



brown 3125



green 3116



blue 3118



gray 3105



anthracite 3106



black 3102

Lacquered Polyethylene

## lighting

---

WHITE LED  
Ref. 54016W



ice 2101

White internally lit unit with LED technology. Available only in matte ice white finish.

RGBW LED  
Ref. 54016L



ice 2101

Unit with internal lighting with RGBW LED technology and remote control unit for switching colors. Available only in matte ice white finish. Remote control included.

## RGBW LED DMX

Ref. 54016D



ice 2101

Unit with internal lighting with RGBW LED technology and remote control unit for switching colors. Also controlled by DMX-1024 (wireless), enabling communication between one or more products simultaneously via the DMX transmitter (not included). There are two options to choose from: Professional XLR DMX and Home WIFI DMX. (Remote control included).

Optional battery

## RGBW LED BATTERY

Ref. 54016DYB

Unit with internal lighting with battery-powered RGBW LED technology. Includes charger and remote control for switching colors and charger. Available only in matte ice white finish.

## RGBW LED DMX BATTERY

Ref. 54016DY



ice 2101

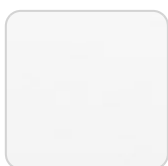
Unit with internal lighting with RGBW LED technology and remote control unit for switching colors. Also controlled by DMX-1024 (wireless), enabling communication between one or more products simultaneously via the DMX transmitter (not included). There are two options to choose from: Professional XLR DMX and Home WIFI DMX. (Remote control included).

## tabletops

---

### HPL

Ref. VVAR02176



white(black edge)



ecru(black edge)



black(black edge)

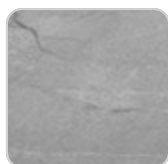
### HPL black edge

### Solid Core

Ref. VVAR02176B



black stone



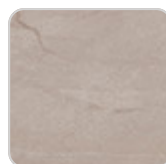
gray stone



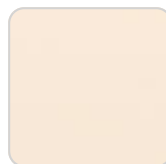
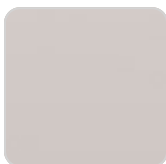
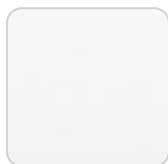
white stone



smoked



ecru stone



# VONDON

tortora stone



garnet

white (white edge)



brown

ecru



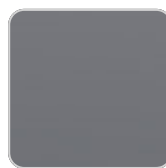
green

tortora



blue

cream

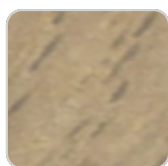


anthracite

## Solid Core wood Ref. VVAR02176B



oak1



oak2

## Ambients

---

