



Products / Planters / Faz Planter 66x55x70

# Faz planter 66x55x70

by Ramón Esteve

Vondom's Faz collection, designed by Ramón Esteve, is one of the firm's most iconic collections. It stands out for its modular design and sophistication, representing harmony, serenity and timelessness through mineral and emphatic shapes. Faz transforms environments with its unique combination of material and light, creating an enveloping and exclusive atmosphere.





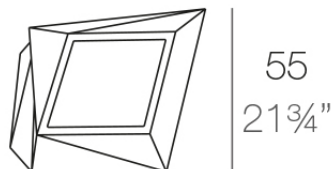
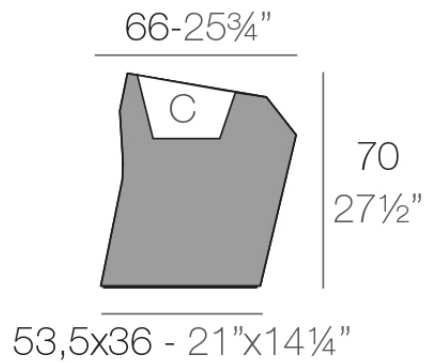
# Info

---

## Description

Made of polyethylene resin by rotational moulding. 100% Recyclable. Item suitable for indoor and outdoor use. Available in different finishes.

Weight: 8 Kg



FAZ Macetero medio C = 21 L  
FAZ Medium planter C = 5<sup>1</sup>/<sub>2</sub> gal



# Finishes

---

## finishes

---

### BASIC

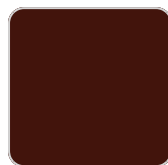
Ref. 54021A



notte blue



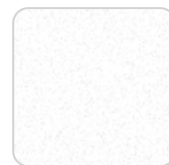
crema



purjai red



orange



white



black



bronze



steel



anthracite



red



khaki



taupe



ecru



beige



ice



green

### Matt Polyethylene

### SELF-WATERING

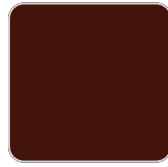
Ref. 54021R



notte blue



crema



purjai red



orange



white



black



bronze



steel



anthracite



red



khaki



taupe



ecru



beige



ice



green

Self-watering system included in all planters except those with basic finish

## LACQUERED

Ref. 54021F



notte blue



crema



modo green



purjai red



orange



white



black



bronze



steel



anthracite



champany



red



khaki



taupe



ecru



beige

Lacquered Polyethylene

## lighting

---

WHITE LED  
Ref. 54021W



ice

White internally lit unit with LED technology. Available only in matte ice white finish.

RGBW LED  
Ref. 54021L



ice

Unit with internal lighting with RGBW LED technology and remote control unit for switching colors. Available only in matte ice white finish. Remote control included.



## RGBW LED DMX

Ref. 54021D



ice

Unit with internal lighting with RGBW LED technology and remote control unit for switching colors. Also controlled by DMX-1024 (wireless), enabling communication between one or more products simultaneously via the DMX transmitter (not included). There are two options to choose from: Professional XLR DMX and Home WIFI DMX. (Remote control included).

Optional battery

## RGBW LED BATTERY

Ref. 54021Y



ice

Unit with internal lighting with battery-powered RGBW LED technology. Includes charger and remote control for switching colors and charger. Available only in matte ice white finish.

## RGBW LED DMX BATTERY

Ref. 54021DY



ice

Unit with internal lighting with RGBW LED technology and remote control unit for



switching colors. Also controlled by DMX-1024 (wireless), enabling communication between one or more products simultaneously via the DMX transmitter (not included). There are two options to choose from: Professional XLR DMX and Home WIFI DMX. (Remote control included).



# Ambients

---

