

Faz table base h:73cm

by Ramón Esteve

Faz is a modular collection of outdoor furniture and planters designed by Ramón Esteve for Vondom. He is the architect of harmony, serenity, timelessness and universality, and he has created mineral and emphatic shapes that make Faz a design that contextualizes with homes and installations. An ambience, encircling as a result of the blissful combination of the material and lighting, so that the sole sensation would be its fusion.



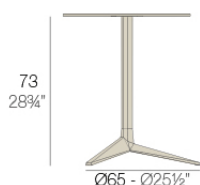
Info

Description

Extruded aluminum tube with cast aluminum base coated with epoxy baked painting. Item suitable for indoor and outdoor use. Table top not included.

Weight: 4.17 Kg

BASE 3 LEGS - BASE 3 PATAS



fixed top / fijo ref: 54126

collapsible top / abatible ref: 54126T

fixed for glass / fijo para vidrio ref: 54126V

FAZ BASE MESA Ø65 H73

FAZ TABLE BASE Ø25 1/2" H28 3/4"

TABLE TOPS OPTIONS - OPCIONES SOBRES



Ø50 cm

Ø19 1/4"



Ø59 cm

Ø23 1/4"



Ø69 cm

Ø27 1/4"



50 x 50 cm

19 1/4" x 19 1/4"



59 x 59 cm

23 1/4" x 23 1/4"

Finishes

finishes

Fixed

Ref. 54126



white



british gray



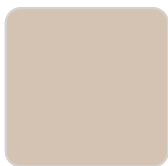
traffic gray



black



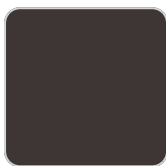
ecru



crema



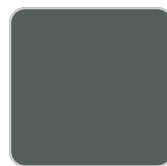
castoro fiber



cacao



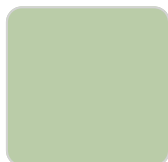
notte blue



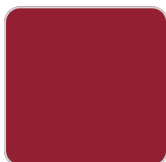
modo green



pickle



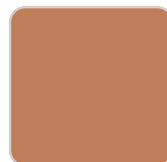
almond



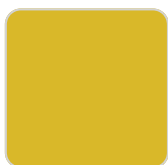
red



purjai red



melon



mostaza

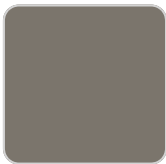
Powder coated aluminum base with non collapsable attachment made of polyamide and fiber glass

COLLAPSIBLE TOP

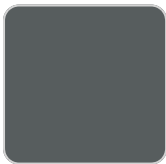
Ref. 54126T



white



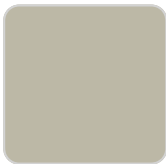
british gray



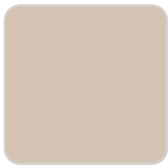
traffic gray



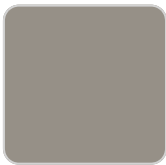
black



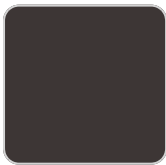
ecru



crema



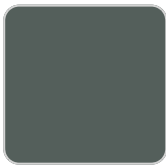
castoro fiber



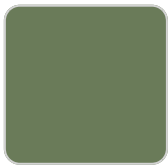
cacao



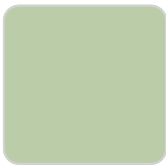
notte blue



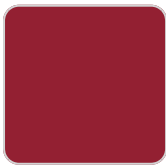
modo green



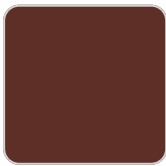
pickle



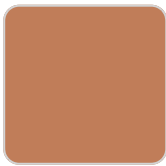
almond



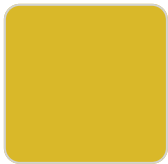
red



purjai red



melon



mostaza

Powder coated aluminum base with 90° collapsable attachment made of polyamide and fiber glass

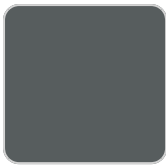
Fixed glass
Ref. 54126V



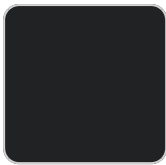
white



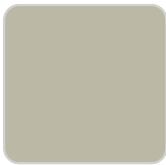
british gray



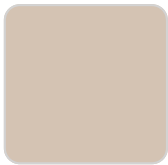
traffic gray



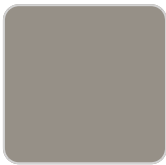
black



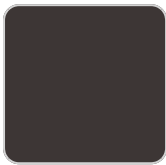
ecru



crema



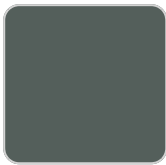
castoro fiber



cacao



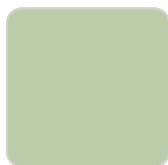
notte blue



modo green



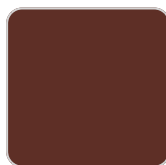
pickle



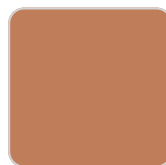
almond



red



purjai red



melon



mostaza

Powder coated aluminum base with non collapsable aluminum attachment powder coated, made exclusively for our glass tops.

Ambients

