

Quartz chair with arms

by Ramón Esteve

The Quartz chairs and table collection, designed by Ramón Esteve for Vondom, is characterized by its **orthogonal geometry and triangular shaped profiles**. Due to the line of one of its vertexes this piece appears extremely light.

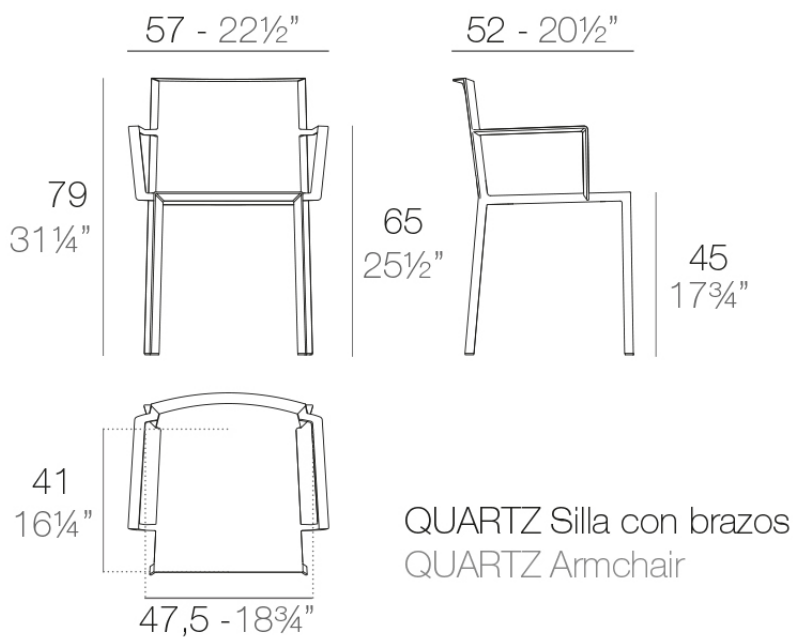


Info

Description

Injected polypropylene with fiber glass. Stackable. Item suitable for indoor and outdoor use.

Weight: 3 Kg



Accessories

- **Fabric**

Fabric

Finishes

finishes

BASIC PP
Ref. 54195



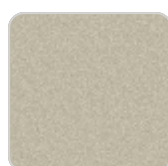
white



black



bronze



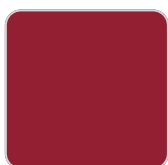
ecru



tortora

Available in various colors

LACQUERED COLOR INJECTION PP
Ref. 54195F



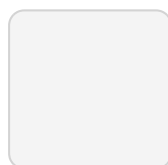
red 3114



anthracite 3106



black 3102



white 3101

—

Ambients

