

## Quartz dining table ø90

by Ramón Esteve

Created by Ramón Esteve for Vondom, it offers a perfect blend of elegance and functionality in outdoor furniture. With an orthogonal geometry and triangular profiles, this collection stands out for its visual lightness and timeless design.



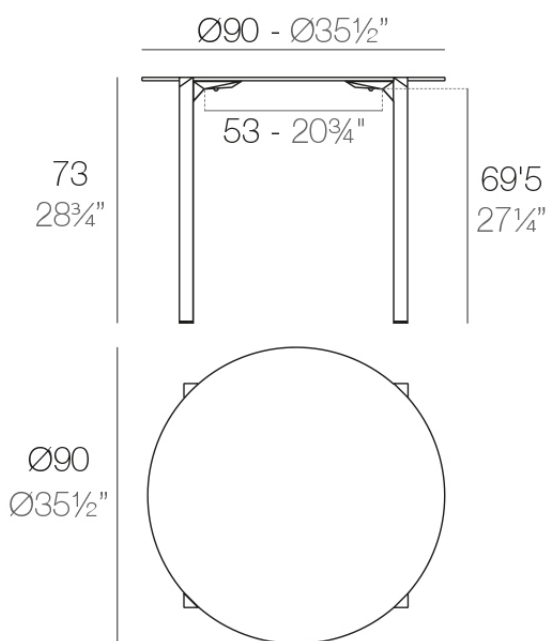
## Info

---

### Description

Made from polypropylene and reinforced with fiberglass manufactured by gas injection. Available in various colors. Suitable for indoor and outdoor use.

Weight: 10.8 Kg



QUARTZ Mesa Ø90  
QUARTZ Table Ø35 1/2"

## Finishes

---

### finishes

---

BASIC PP

Ref. 54201



white



ecru



black

Available in various colors

### tabletops

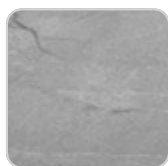
---

Solid Core

Ref. VVAR02351



black stone



gray stone



white stone



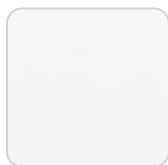
smoked



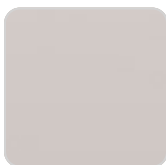
ecru stone



tortora stone



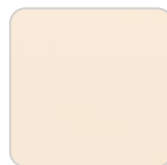
white (white edge)



ecru



tortora



cream



garnet

brown

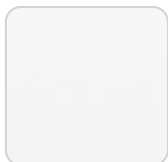
green

blue

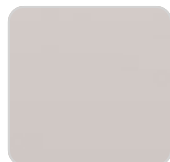
anthracite

## HPL

Ref. VVAR02351



white(black edge)



ecru(black edge)

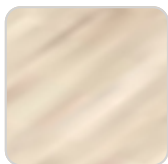


black(black edge)

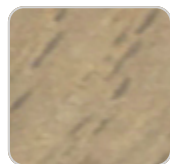
## HPL black edge

## Solid Core wood

Ref. VVAR02351



oak1



oak2

