

## Quartz dining table ø100

by Ramón Esteve

The Quartz chairs and table collection, designed by Ramón Esteve for Vondom, is characterized by its **orthogonal geometry and triangular shaped profiles**. Due to the line of one of its vertexes this piece appears extremely light.



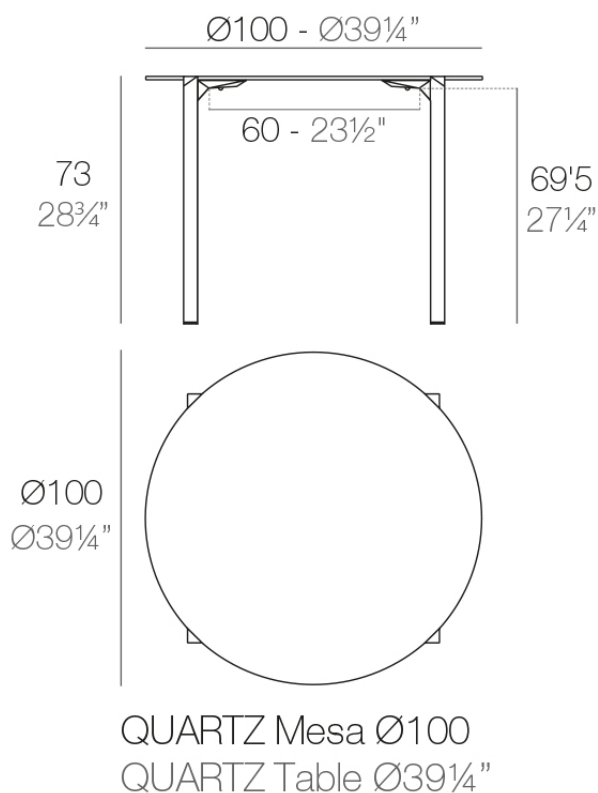
## Info

---

### Description

Made from polypropylene and reinforced with fiberglass manufactured by gas injection. Available in various colors. Suitable for indoor and outdoor use.

Weight: 13.06 Kg



## Finishes

---

### finishes

---

BASIC PP  
Ref. 54202



white



black



ecru

Available in various colors

### tabletops

---

Solid Core  
Ref. VVAR02390

HPL  
Ref. VVAR02390

HPL black edge

Solid Core wood

Ref. VVAR02390

## tabletops

---

Solid Core

Ref. VVAR02390



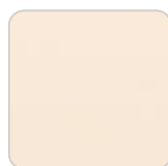
notte blue



british gray



traffic gray



crema



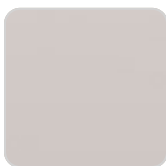
yule brown



castoro fiber



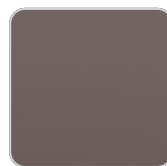
pulpis gray



piombo gray



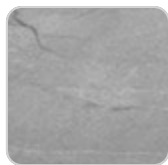
kandia black



cacao



modo green



yule gray



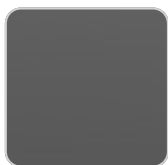
purjai red



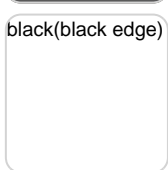
gioia bianco

HPL

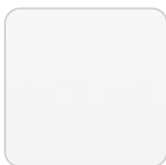
Ref. VVAR02390



black(black edge)



ecru(black edge)



white(black edge)



HPL black edge

Solid Core wood

Ref. VVAR02390



oak1



oak2



