

Quartz dining table 79x79

by Ramón Esteve

The Quartz chairs and table collection, designed by Ramón Esteve for Vondom, is characterized by its **orthogonal geometry and triangular shaped profiles**. Due to the line of one of its vertexes this piece appears extremely light.

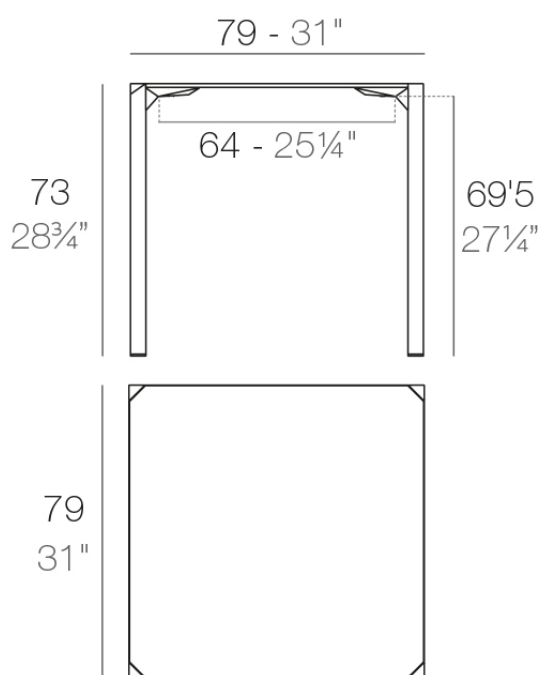


Info

Description

Made from polypropylene and reinforced with fiberglass manufactured by gas injection. Available in various colors. Suitable for indoor and outdoor use.

Weight: 10.45 Kg



QUARTZ Mesa 79 x 79
QUARTZ Table 31" x 31"

Finishes

finishes

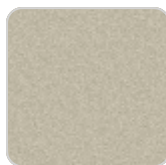
BASIC PP
Ref. 54205



white



black



ecru

Available in various colors

tabletops

Solid Core
Ref. VVAR02393

HPL
Ref. VVAR02393

HPL black edge

Solid Core wood

Ref. VVAR02393

tabletops

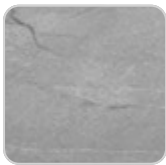
Solid Core
Ref. VVAR02393



kandia black



cacao



yule gray



modo green



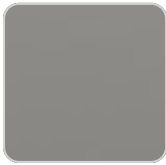
gioia bianco



purjai red



notte blue



british gray



traffic gray



crema



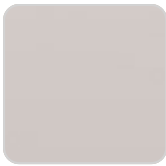
yule brown



castoro fiber

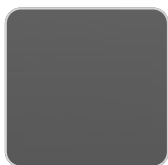


pulpis gray

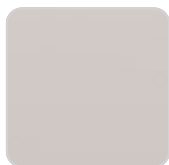


piombo gray

HPL
Ref. VVAR02393



black(black edge)



ecru(black edge)



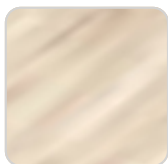
white(black edge)



HPL black edge

Solid Core wood

Ref. VVAR02393



oak1



oak2



