

Faz wood lounge table 200x100x74

by Ramón Esteve

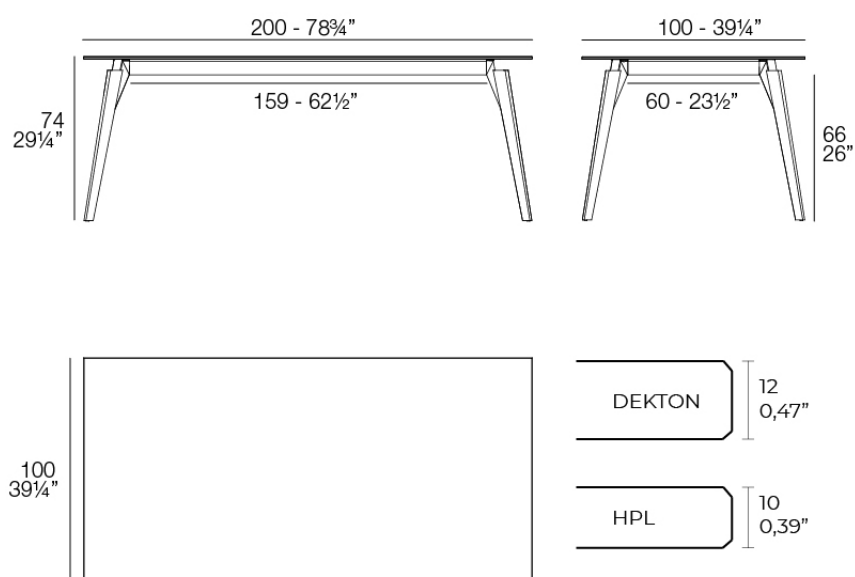
Vondom's Faz collection, designed by Ramón Esteve, is one of the firm's most iconic collections. It stands out for its modular design and sophistication, representing harmony, serenity and timelessness through mineral and emphatic shapes. Faz transforms environments with its unique combination of material and light, creating an enveloping and exclusive atmosphere.



Info

Description

Weight: 45.86 Kg



FAZ WOOD Mesa Salón 200 x 100
FAZ WOOD Lounge Table 78 3/4" x 39 1/4"

Finishes

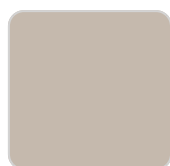
tabletops

HPL

Ref. 54308



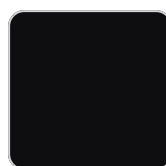
white



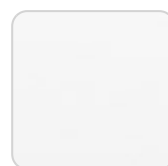
ecru



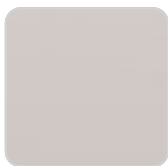
gray



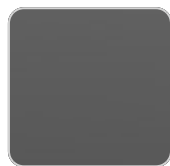
black



white(black edge)



ecru(black edge)



black(black edge)

HPL black edge

Solid Core

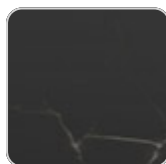
Ref. 54308B



ecru stone



tortora stone



black stone



gray stone



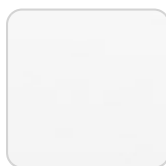
white stone



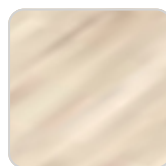
smoked



white



white (white edge)



oak1



ecru



oak2



tortora



cream



garnet



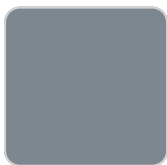
brown



green



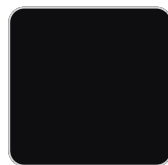
blue



gray



anthracite



black

HPL solid core

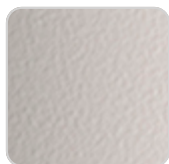
estructura

ALUMINIUM

Ref. VVAR03084



white



ecru



black

legs

Ash

Ref. VVAR03080



wood 1



wood 2

Ambients

