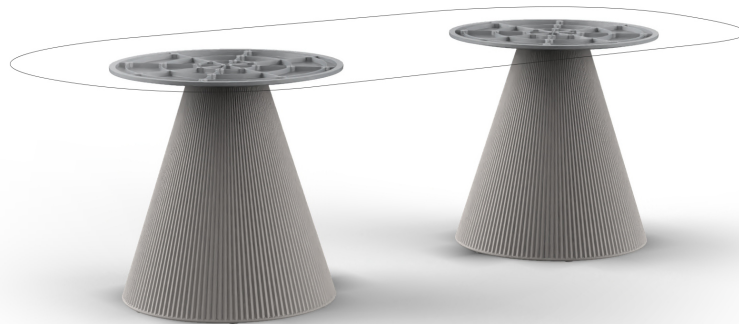


## Gatsby doble\_base ø65x73cm s70

by Ramón Esteve

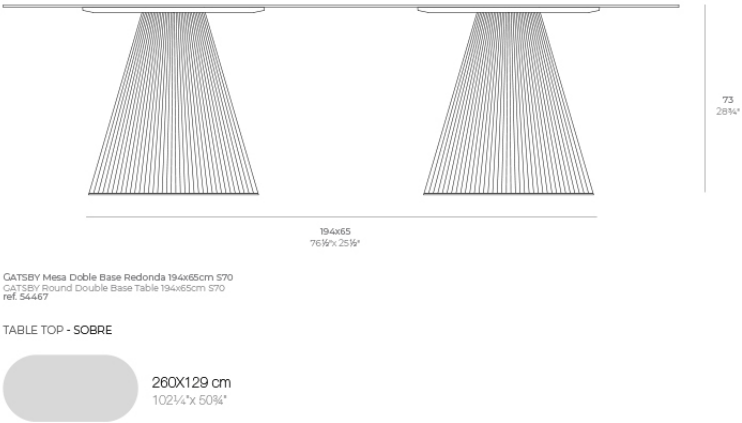
The Gatsby collection, designed by Ramón Esteve for Vondom, recalls the Art Déco lighting. Those crazy twenties. “Something new, extraordinary, beautiful, simple but sophisticatedly designed” said Francis Scott Fitzgerald about his aims for the novel he was about to write. The Great Gatsby was born in an age of prosperity, parties and excess. They called it “the American Dream”.



Info

Description

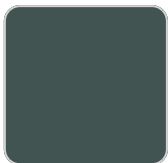
Weight: 16 Kg



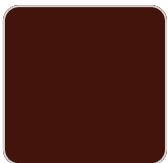
Finishes

finishes

BASIC  
Ref. 54467



green



purjai red



orange



notte blue



crema



white



black



bronze



steel



anthracite



red



khaki



taupe



ecru



beige

Matt Polyethylene

