

Posidonia low table

by Ramón Esteve

Posidonia, the new collection of **designer outdoor furniture** is capable of creating an atmosphere of serenity and balance, awakening the user's sensibility and inviting them to enjoy every moment.



Info

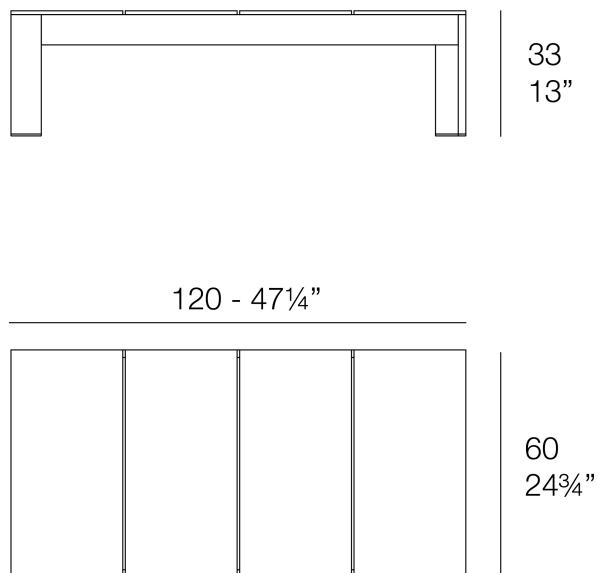
Description

The Posidonia low tables, designed by Ramón Esteve, stand out for their thermo-lacquered aluminium structure, prepared to face different weather conditions, offering durability and lightness.

Their HPL surface is highly resistant to scratches, and they are available in different sizes.

In addition, a wide palette of colours allows you to create customised combinations of HPL surface and aluminium structure.

Weight: 20.15 Kg



POSIDONIA Mesa Baja 120x60x33
POSIDONIA Low Table 47 $\frac{1}{4}$ "x24 $\frac{3}{4}$ "x13"

Finishes

finishes

ALUMINIUM
Ref. 54712



white



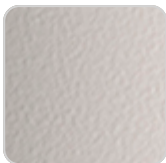
british gray



traffic gray



black



ecru



crema



castoro fiber



cacao



notte blue



modo green



pickle



almond



red



purjai red



melon



VONDOM

mostaza



Lacquered aluminium profile.

Ambients

