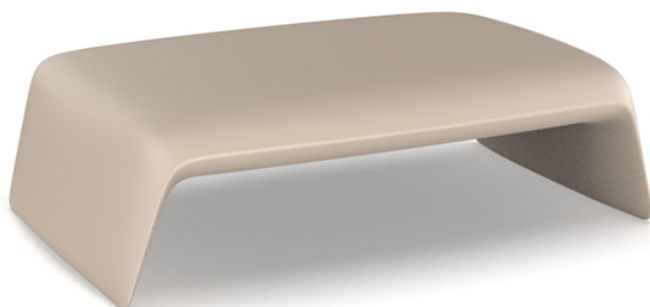


## Blow coffee table 120x79x35

by Stefano Giovannoni

**Blow Collection**, designed by Stefano Giovannoni for Vondom, comes from the willing to develop a **new family of in&out design products** in tune with the Pillow family but different in typology.



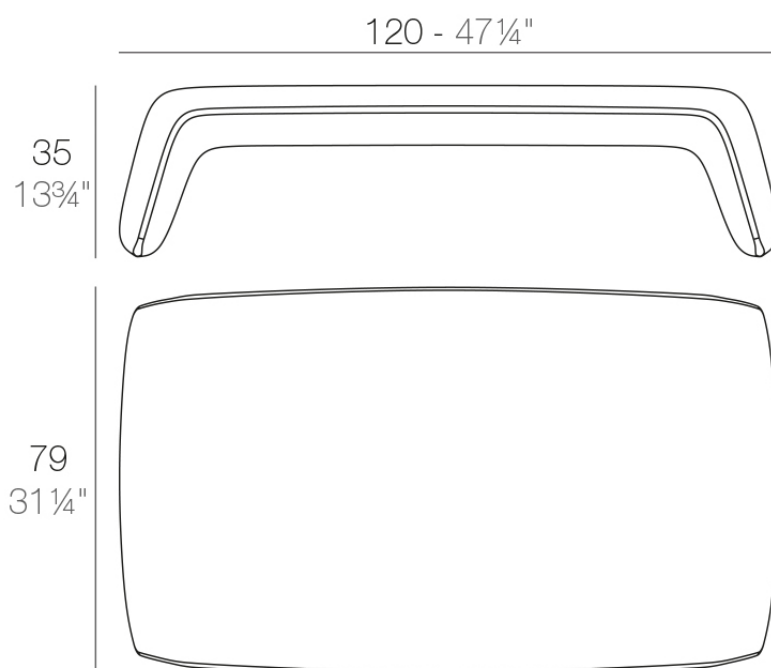
## Info

---

### Description

Made of polyethylene resin by rotational moulding. 100% Recyclable. Item suitable for indoor and outdoor use. Available in different finishes.

Weight: 15 Kg



BLOW Mesa Baja  
BLOW Low Table

Finishes

finishes

BASIC  
Ref. 55015



crema



purjai red



orange



notte blue



white



black



bronze



steel



anthracite



red



khaki



taupe



ecru



beige



ice





green

Matt Polyethylene

LACQUERED  
Ref. 55015F



crema



modo green



purjai red



orange



notte blue



white



black



bronze



steel



anthracite



champany



red



khaki



taupe



ecru





beige



Lacquered Polyethylene

## lighting

---

### LACQUERED LIGHT

Ref. 55015FW



white



black



bronze



steel



anthracite



red



pistachio



orange



khaki



navy



taupe



ecru



beige



champany

Lacquered polyethylene. Includes white ambient light with white LED.

LIGHT

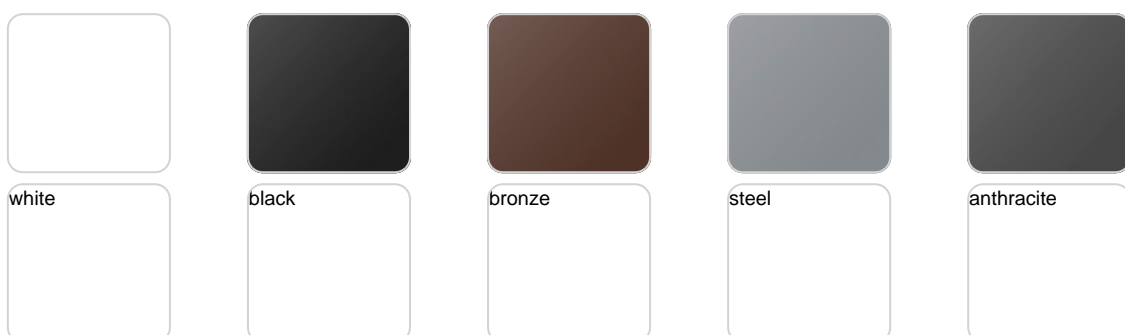
Ref. 55015W



Matt polyethylene. Includes white ambient light either with white LED.

LACQUERED RGB LED

Ref. 55015FL





Lacquered polyethylene. Includes ambient RGB LED light operated by remote control. Colors can be selected or changed automatically (white,red,green,blue,light blue, pink and yellow)

## RGB LED Ref. 55015L





navy



taupe



ecru



beige

Matt polyethylene. Includes ambient RGB LED light operated by remote control. Colors can be selected or changed automatically (white, red, green, blue, light blue, pink and yellow)

## RGB LED DMX

Ref. 55015D



ice



white



black



bronze



steel



anthracite



red



pistachio



orange



khaki



navy



taupe



ecru



beige

Matt polyethylene. Includes ambient RGB LED light operated by DMX512 wireless, allowing the connexion to light control systems (XLR), WI-FI routers, home, etc.

## LACQUERED RGB LED DMX

Ref. 55015FD



lacquered polyethylene. Includes ambient RGB LED light operated by DMX512 wireless, allowing the connexion to light control systems (XLR), Wi-Fi routers, home, etc.

## RGB LED BATTERY

Ref. 55015DY



Matt polyethylene. Includes cordless RGB LED ambient light with rechargeable batteries, operated by remote control.

LACQUERED RGB LED BATTERY

Ref. 55015FDY



# VONDON



Lacquered polyethylene. Includes cordless RGB LED ambient light with rechargeable batteries, operated by remote control.

## Ambients

---

