

Products / Dining Tables / Mari-sol Table Base H:73cm

Mari-sol table base h:73cm

by Eugeni Quitllet

Mari-sol Collection, designed by Eugeni Quitllet for Vondom, is composed by a design table that **combines technology in its function with sensuality** in its shape. The answer for adorning terraces around the world.



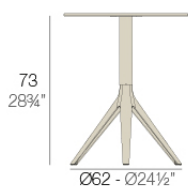
Info

Description

Extruded aluminum tube with cast aluminum base coated with epoxy baked painting. Item suitable for indoor and outdoor use. Table top not included.

Weight: 3.59 Kg

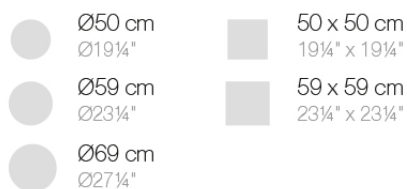
BASE 3 LEGS - BASE 3 PATAS



fixed top / fijo ref. 65010
 collapsable top / abatible ref. 65010T
 fixed for glass / fijo para vidrio ref. 65010V

MARI-SOL BASE MESA Ø62 H73
 MARI-SOL TABLE BASE Ø24 1/2" H28 3/4"

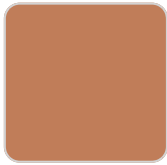
TABLE TOPS OPTIONS - OPCIONES SOBRES



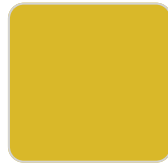
Finishes

finishes

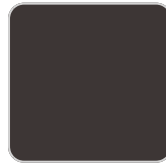
Fixed
Ref. 65010



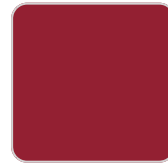
melon



mostaza



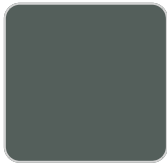
bronze



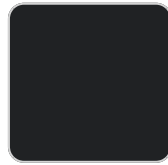
red



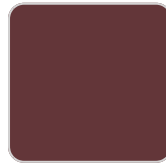
ecru



modo green



black



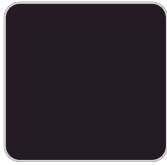
purjai red



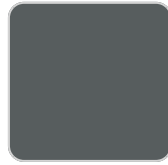
british gray



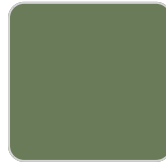
white



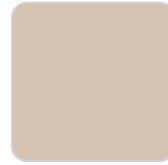
notte blue



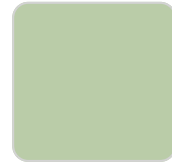
traffic gray



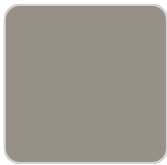
pickle



crema



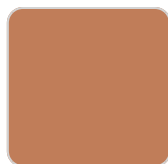
almond



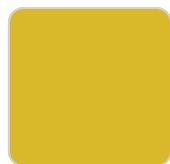
castoro fiber

Powder coated aluminum base with non collapsable attachment made of polyamide and fiber glass

COLLAPSIBLE TOP
Ref. 65010T



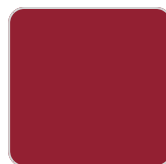
melon



mostaza



bronze



red



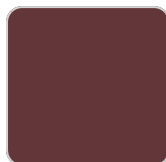
ecru



modo green



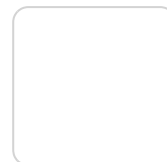
black



purjai red



british gray



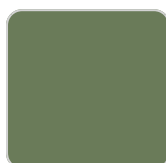
white



notte blue



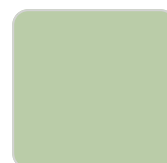
traffic gray



pickle



crema



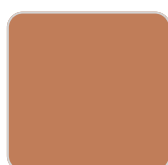
almond



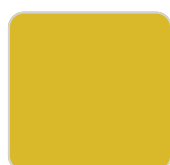
castoro fiber

Powder coated aluminum base with 90° collapsable attachment made of polyamide and fiber glass

Fixed glass
Ref. 65010V



melon



mostaza



bronze



red



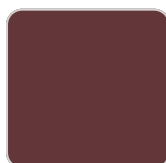
ecru



modo green



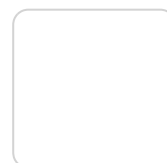
black



purjai red



british gray



white



notte blue



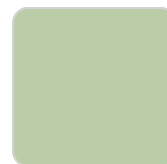
traffic gray



pickle



crema



almond



castoro fiber

Powder coated aluminum base with non collapsable aluminum attachment powder coated, made exclusively for our glass tops.

Ambients

