

## Bloom planter

by Eugeni Quitllet

Bloom lamp-planter collection, designed by Eugeni Quitllet for Vondom.  
Metaphorically, this collection **captures the flowering stage found in nature.**



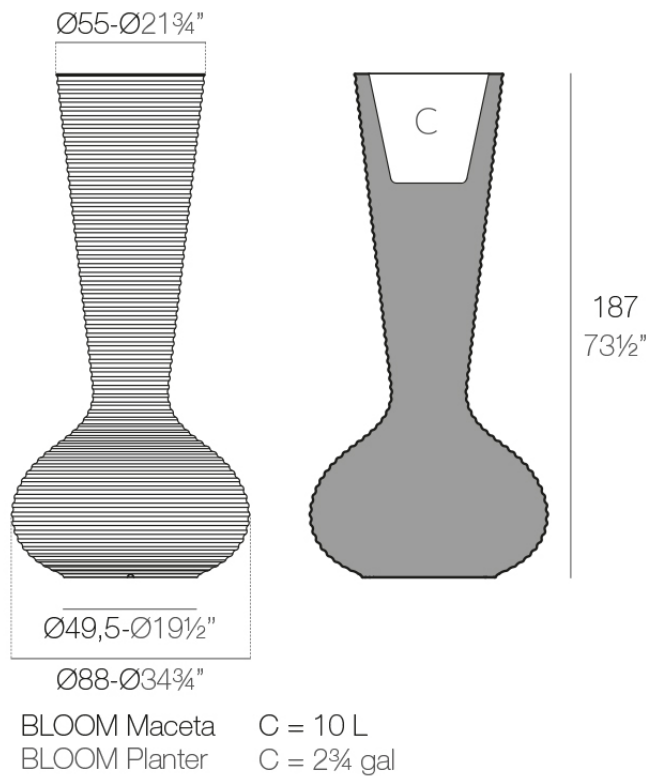
## Info

---

### Description

Made of polyethylene resin by rotational moulding. 100% Recyclable. Item suitable for indoor and outdoor use. Available in different finishes.

Weight: 35.06 Kg



## Finishes

---

### finishes

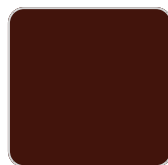
---

#### BASIC

Ref. 65019A



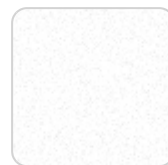
green



purjai red



orange



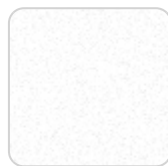
ice



notte blue



crema



white



black



bronze



steel



anthracite



red



khaki



taupe



ecru



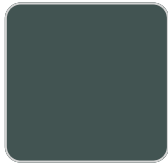
beige

#### Matt Polyethylene

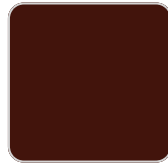
#### SELF-WATERING

Ref. 65019R

# VONDOM



green



purjai red



orange



ice



notte blue



crema



white



black



bronze



steel



anthracite



red



khaki



taupe



ecru



beige

Self-watering system included in all planters except those with basic finish

## LACQUERED

Ref. 65019F



purjai red



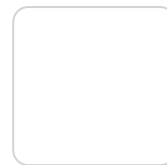
orange



notte blue



crema



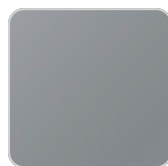
white



black



bronze



steel



anthracite



red

# VONDONM



khaki



taupe



ecru



beige



modo green



champany

Lacquered Polyethylene

## lighting

---

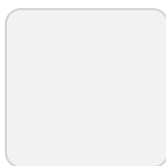
WHITE LED  
Ref. 65019W



ice

White internally lit unit with LED technology. Available only in matte ice white finish.

RGBW LED  
Ref. 65019L



ice

Unit with internal lighting with RGBW LED technology and remote control unit for switching colors. Available only in matte ice white finish. Remote control included.

## RGBW LED DMX Ref. 65019D



ice

Unit with internal lighting with RGBW LED technology and remote control unit for switching colors. Also controlled by DMX-1024 (wireless), enabling communication between one or more products simultaneously via the DMX transmitter (not included). There are two options to choose from: Professional XLR DMX and Home WIFI DMX. (Remote control included).  
Optional battery

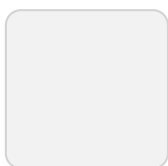
## RGBW LED BATTERY Ref. 65019Y



ice

Unit with internal lighting with battery-powered RGBW LED technology. Includes charger and remote control for switching colors and charger. Available only in matte ice white finish.

## RGBW LED DMX BATTERY Ref. 65019DY



ice

Unit with internal lighting with RGBW LED technology and remote control unit for

# VONDOM

switching colors. Also controlled by DMX-1024 (wireless), enabling communication between one or more products simultaneously via the DMX transmitter (not included). There are two options to choose from: Professional XLR DMX and Home WIFI DMX. (Remote control included).

## Ambients

---

