

Planter ø40x35

Studio Vondom's extensive collection of indoor and outdoor planters offers timeless and minimalist designs that can help create unique and original atmospheres in homes, restaurants, and any other space.



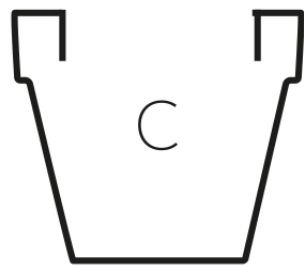
Info

Description

Pot made of polyethylene resin by rotational moulding. 100% Recyclable. Item suitable for indoor and outdoor use. Available in different finishes.

Weight: 1.5 Kg

$\text{Ø}40 - \text{Ø}15\frac{3}{4}"$



35
 $13\frac{3}{4}"$

$\text{Ø}24 - \text{Ø}9\frac{1}{2}"$

MACETA $\text{Ø}40$

MACETA $\text{Ø}15\frac{3}{4}"$

C = 30 L

C = 8 gal

Finishes

finishes

Simple
Ref. 40140



white 2001



black 2002



ecru 2003



tortora 2004



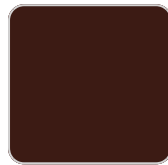
gray 2005



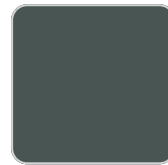
anthracite 2006



brown 2008



garnet 2015



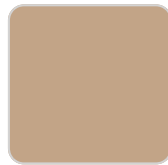
green 2016



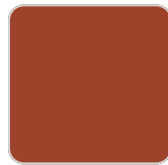
cream 2017



blue 2018



camel 2020



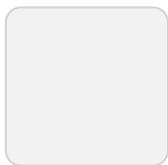
clay 2022



ecru granite



cream granite



ice 2101

Matt finishes pot one wall

Simple Lacquered
Ref. 40140F

VONDOM



white 3101



black 3102



ecru 3103



tortora 3104



gray 3105



anthracite 3106



garnet 3113



green 3116



cream 3117



blue 3118



brown 3125

plato

Ref. 42731



white 2001



black 2002



ecru 2003



tortora 2004



gray 2005



anthracite 2006



brown 2008



garnet 2015



green 2016



cream 2017



blue 2018



camel 2020



clay 2022



ecru granite



cream granite

VONDOM



ice 2101

