

Vases table 210x100x73

by JM Ferrero

VASES Collection, is made up of flowerpots, furniture and lighting designed by the Valencian designer JM Ferrero. The shapes of the pieces draw inspiration from diamond cutting, resulting in clear-cut shapes with great style that create a visually striking impact.

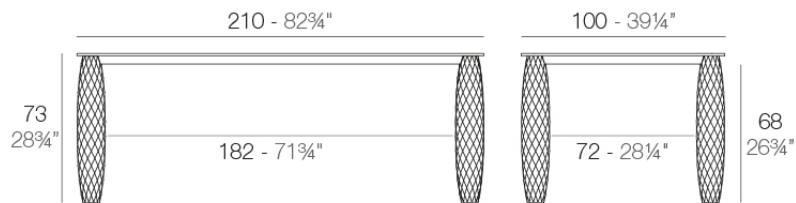


Info

Description

Made of polyethylene resin by rotational moulding. 100% Recyclable. Item suitable for indoor and outdoor use. Available in different finishes.

Weight: 54.31 Kg



VASES Mesa 210x100
VASES Dinning Table 82 3/4"x39 1/4"

Finishes

finishes

Basic

Ref. 47079



white 201



ecru 2003



tortora 2004



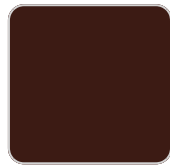
gray 2005



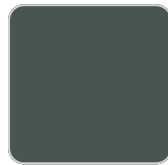
red



brown 2008



garnet 2015



green 2016



anthracite 2006



cream 2017



black 2002



blue 2018



ice 2101



khaki



beige

Matt Polyethylene

Lacquered

Ref. 47079F



white 3101



black 3102



ecru 3103



tortora 3104



gray 3105

VONDOM



anthracite 3106



garnet 3113



green 3116



cream 3117



blue 3118



brown 3125

Lacquered Polyethylene

tabletops

HPL Solid Core Top Ref. VVAR00817



green stone



ecru stone



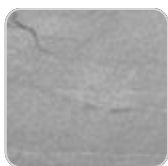
tortora stone



smoked



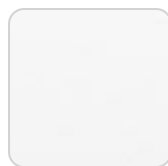
black stone



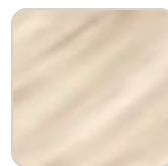
gray stone



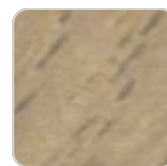
white stone



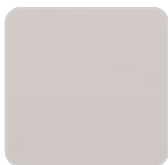
white (white edge)



oak1



oak2



ecru



tortora



cream



camel



clay



garnet



brown



green

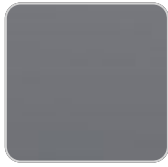


blue



gray

VONDOM



anthracite

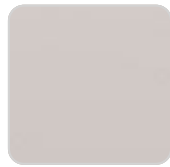


ocean

HPL Black Edge Top Ref. VVAR00817



white(black edge)



ecru(black edge)



black(black edge)

Ambients

