

Nano chrismy

by Teresa Sapey

Chrismy, the innovative creation of visionary Teresa Sapey and designed exclusively for Vondom, represents a bold shift in the concept of the modern Christmas tree. This stunning piece seamlessly blends elements of **nature** with contemporary design, showcasing a harmonious blend of modern elegance and functionality.

Designed and manufactured in Europe, Chrismy features **organic** and **elegant** shapes that rise gracefully in each silhouette, transcending traditional decor. This synthesis of organic inspiration and avant-garde design makes this modern Christmas tree a captivating focal point in any space.

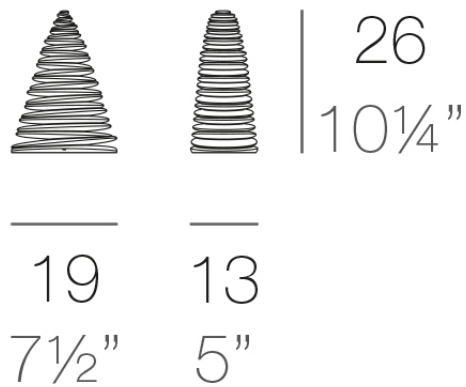


Info

Description

Made of polyethylene resin by rotational moulding. 100% Recyclable. Item suitable for indoor and outdoor use. Available in different finishes.

Weight: 0.37 Kg



CHRISMY Nano Árbol 25cm
CHRISMY Nano Tree 9 3/4"

Finishes

finishes

Lacquered
Ref. 49069F



white 3101



black 3102



ecru 3103



tortora 3104



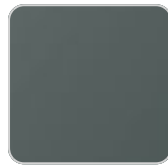
gray 3105



anthracite 3106



garnet 3113



green 3116



cream 3117



blue 3118



brown 3125

Lacquered Polyethylene

lighting

Led – White
Ref. 49069W

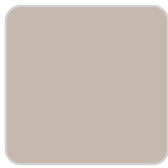


VONDOM

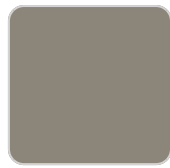
ice 2101

White internally lit unit with LED technology. Available only in matte ice white finish.

LED RGBW – Battery
Ref. 49069Y



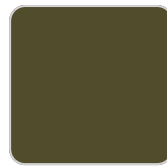
ecru 2003



tortora 2004



ice 2101



khaki



beige

Unit with internal lighting with battery-powered RGBW LED technology. Includes charger and remote control for switching colors and charger. Available only in matte ice white finish.

Ambients

