

Vertex table 90x90 hpl

by Karim Rashid

KARIM RASHID's latest masterpiece can be witnessed in **VERTEX** – a range of contemporary and sculpted outdoor and indoor designer furniture collection created exclusively for the Spanish brand **VONDOM**.

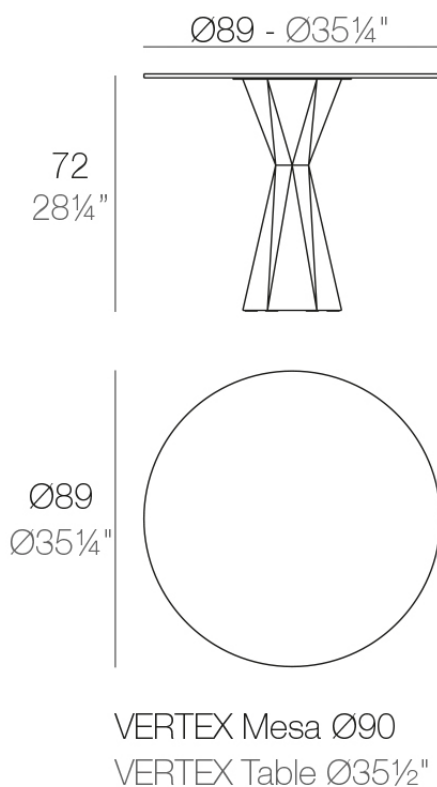


Info

Description

Made of polyethylene resin by rotational moulding. 100% Recyclable. Item suitable for indoor and outdoor use. Available in different finishes. Tabletop with HPL.

Weight: 54.19 Kg

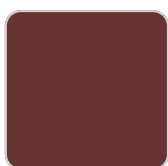


Finishes

finishes

HPL Black Edge

Ref. 51018C



garnet 2015



green 2016



cream 2017



blue 2018

Matt Polyethylene

HPL Solid Core

Ref. 51018CB



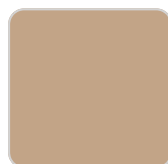
garnet 2015



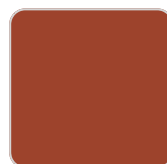
green 2016



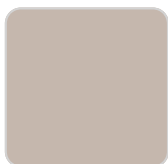
cream 2017



camel 2020



clay 2022



ecru granite



cream granite

Matt Polyethylene

Lacquered

Ref. 51018CF



white 3101



black 3102



ecru 3103



tortora 3104



gray 3105



anthracite 3106



garnet 3113



green 3116



cream 3117



blue 3118



brown 3125

Lacquered Polyethylene

lighting

Led White

Ref. 51018CW



ice 2101

White internally lit unit with LED technology. Available only in matte ice white finish.

Led RGBW

Ref. 51018CL



ice 2101

Unit with internal lighting with RGBW LED technology and remote control unit for switching colors. Available only in matte ice white finish. Remote control included.

Led RGBW DMX

Ref. 51018CD



ice 2101

Unit with internal lighting with RGBW LED technology and remote control unit for switching colors. Also controlled by DMX-1024 (wireless), enabling communication between one or more products simultaneously via the DMX transmitter (not included). There are two options to choose from: Professional XLR DMX and Home WIFI DMX. (Remote control included).

Optional battery

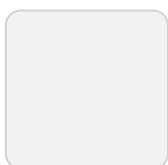
Led RGBW Battery

Ref. 51018CDYB

Unit with internal lighting with battery-powered RGBW LED technology. Includes charger and remote control for switching colors and charger. Available only in matte ice white finish.

Led RGBW DMX Battery

Ref. 51018CDY



ice 2101

Unit with internal lighting with RGBW LED technology and remote control unit for switching colors. Also controlled by DMX-1024 (wireless), enabling communication between one or more products simultaneously via the DMX transmitter (not included). There are two options to choose from: Professional XLR DMX and Home WIFI DMX. (Remote control included).

tabletops

HPL Black Edge

Ref. VVAR00577



white(black edge)



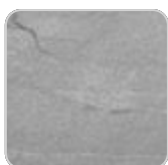
ecru(black edge)



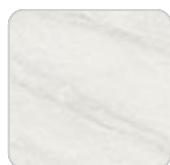
black(black edge)

HPL Solid Core

Ref. VVAR00526



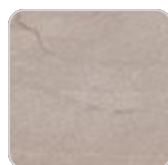
gray stone



white stone



smoked



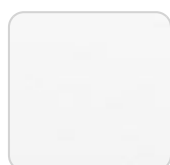
ecru stone



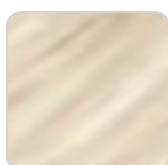
tortora stone



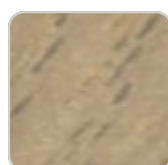
black stone



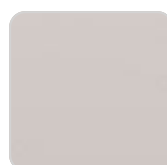
white (white edge)



oak1



oak2



ecru

VONDOM



tortora



cream



garnet



brown



green



blue



anthracite

