

Vertex table 90x90 hpl

by Karim Rashid

KARIM RASHID's latest masterpiece can be witnessed in **VERTEX** – a range of contemporary and sculpted outdoor and indoor designer furniture collection created exclusively for the Spanish brand **VONDOM**.

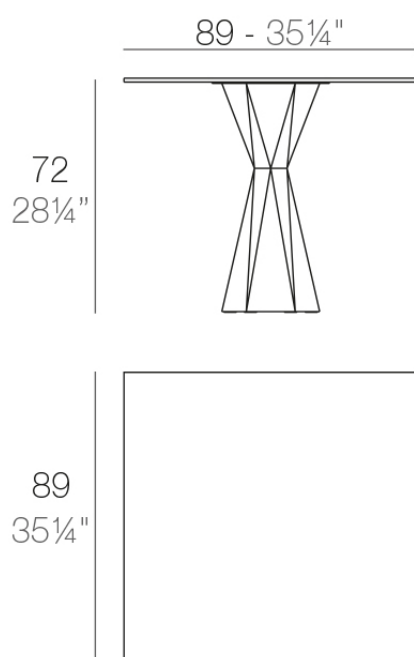


Info

Description

Made of polyethylene resin by rotational moulding. 100% Recyclable. Item suitable for indoor and outdoor use. Available in different finishes. Tabletop with HPL.

Weight: 54.19 Kg



VERTEX Mesa 90x90
VERTEX Table 35 1/2"x35 1/2"

Finishes

finishes

Basic

Ref. 51018C



white 2001



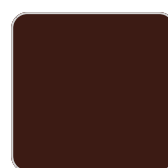
black 2002



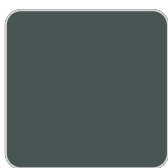
tortora 2004



anthracite 2006



garnet 2015



green 2016



cream 2017



blue 2018

Matt Polyethylene

Lacquered

Ref. 51018CF



white 3101



black 3102



ecru 3103



tortora 3104



gray 3105



anthracite 3106



garnet 3113



green 3116



cream 3117



blue 3118



brown 3125

Lacquered Polyethylene

lighting

Led – White
Ref. 51018CW



ice 2101

White internally lit unit with LED technology. Available only in matte ice white finish.

LED RGBW – Cable
Ref. 51018CL



ice 2101

Unit with internal lighting with RGBW LED technology and remote control unit for switching colors. Available only in matte ice white finish. Remote control included.

LED RGBW DMX – Cable
Ref. 51018CD



ice 2101

Unit with internal lighting with RGBW LED technology and remote control unit for switching colors. Also controlled by DMX-1024 (wireless), enabling communication between one or more products simultaneously via the DMX transmitter (not included). There are two options to choose from: Professional XLR DMX and Home WIFI DMX. (Remote control included).
Optional battery

LED RGBW – Battery
Ref. 51018CY



ice 2101

Unit with internal lighting with battery-powered RGBW LED technology. Includes charger and remote control for switching colors and charger. Available only in matte ice white finish.

LED RGBW DMX – Battery
Ref. 51018CDY



ice 2101

Unit with internal lighting with RGBW LED technology and remote control unit for switching colors. Also controlled by DMX-1024 (wireless), enabling communication between one or more products simultaneously via the DMX

VONDOM

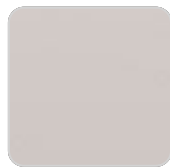
transmitter (not included). There are two options to choose from: Professional XLR DMX and Home WIFI DMX. (Remote control included).

tabletops

HPL Solid Core Top Ref. VVAR00526



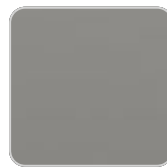
white (white edge)



ecru



tortora



smoked



cream



garnet



brown



green



blue



anthracite



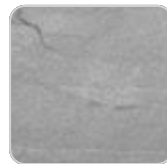
white stone



ecru stone



tortora stone



gray stone



black stone



oak1



oak2

HPL Black Edge Top Ref. VVAR00577



white(black edge)



ecru(black edge)



black(black edge)

