

Rest table xl 300x120x72

by A-cero

In a world where art and design converge, the Rest Collection by A-Cero was born. Drawing inspiration from the ancient art of origami, each piece pays homage to Japanese folding techniques, blending elegance and simplicity with the philosophy “less is more.”

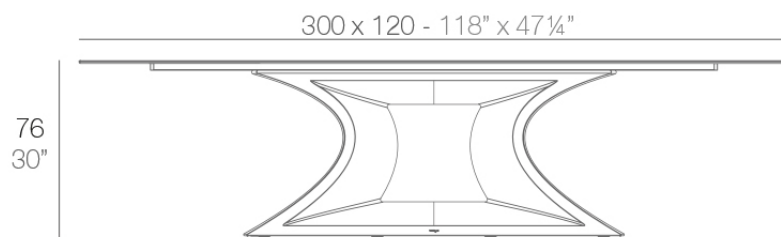


Info

Description

Table Made of polyethylene resin by rotational moulding. 100% Recyclable. Item suitable for indoor and outdoor use. Tabletop of HPL. Available in different finishes.

Weight: 154.1 Kg



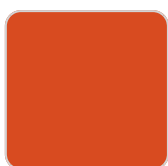
REST Mesa XL
REST Table XL

Finishes

finishes

BASIC

Ref. 53011B



orange



white 201



ecru 2003



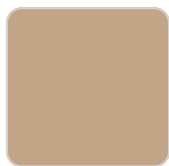
tortora 2004



gray 2005



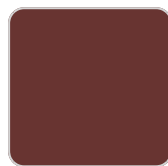
cream 2017



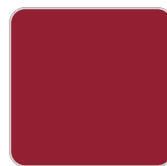
camel 2020



clay 2022



garnet 2015



red



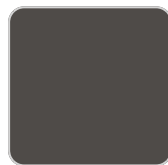
brown 2008



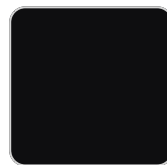
green 2016



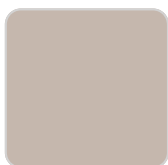
blue 2018



anthracite 2006



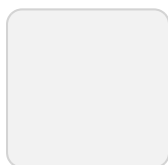
black 2002



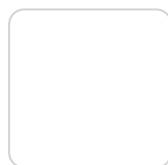
ecru granite



cream granite



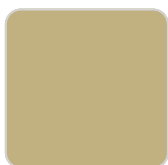
ice 2101



for lacquering



khaki



beige

Matt Polyethylene

LACQUERED

Ref. 53011F



white 3101



ecru 3103



tortora 3104



cream 3117



garnet 3113



brown 3125



green 3116



blue 3118



gray 3105



anthracite 3106



black 3102

Lacquered Polyethylene

lighting

WHITE LED
Ref. 53011W



ice 2101

White internally lit unit with LED technology. Available only in matte ice white finish.

RGBW LED
Ref. 53011L



ice 2101

Unit with internal lighting with RGBW LED technology and remote control unit for switching colors. Available only in matte ice white finish. Remote control included.

RGBW LED DMX

Ref. 53011D



ice 2101

Unit with internal lighting with RGBW LED technology and remote control unit for switching colors. Also controlled by DMX-1024 (wireless), enabling communication between one or more products simultaneously via the DMX transmitter (not included). There are two options to choose from: Professional XLR DMX and Home WIFI DMX. (Remote control included).

Optional battery

RGBW LED BATTERY

Ref. 53011DYB



ice 2101

Unit with internal lighting with battery-powered RGBW LED technology. Includes charger and remote control for switching colors and charger. Available only in matte ice white finish.

RGBW LED DMX BATTERY

Ref. 53011DY



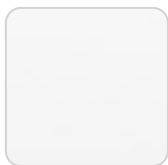
ice 2101

Unit with internal lighting with RGBW LED technology and remote control unit for switching colors. Also controlled by DMX-1024 (wireless), enabling communication between one or more products simultaneously via the DMX transmitter (not included). There are two options to choose from: Professional XLR DMX and Home WIFI DMX. (Remote control included).

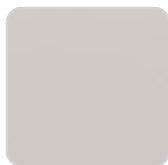
tabletops

HPL

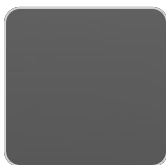
Ref. VVAR00391



white(black edge)



ecru(black edge)

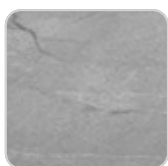


black(black edge)

HPL black edge

Solid Core

Ref. VVAR03382



gray stone



white stone



smoked



ecru stone

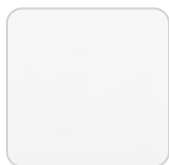


tortora stone

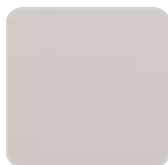
VONDOM



black stone



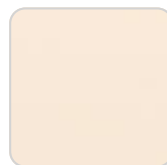
white (white edge)



ecru



tortora



cream



garnet



brown



green

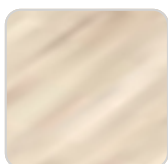


blue

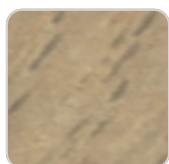


anthracite

Solid Core wood Ref. VVAR03382



oak1



oak2

Ambients

