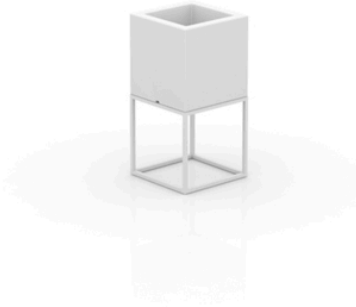


## Vela nano cube planter 18x18x36

by Ramón Esteve

Vela collection, designed by Ramón Esteve for Vondom, captures the essence of modern design in outdoor living. This collection of contemporary outdoor furniture and planters is crafted to provide exceptional comfort and quality, similar to indoor furnishings, while retaining its distinctive features. With a focus on sleek design, each piece enhances contemporary outdoor furniture and showcases the feeling of modern luxury.

Manufactured in Europe, the Vela collection is an example of superior craftsmanship and innovation. Crafted from the highest quality materials, these pieces are durable and weather resistant, ensuring lasting beauty and functionality. Whether entertaining or enjoying quiet moments, the collection transforms your outdoor space into a sophisticated retreat that perfectly blends modern design with comfort and style.



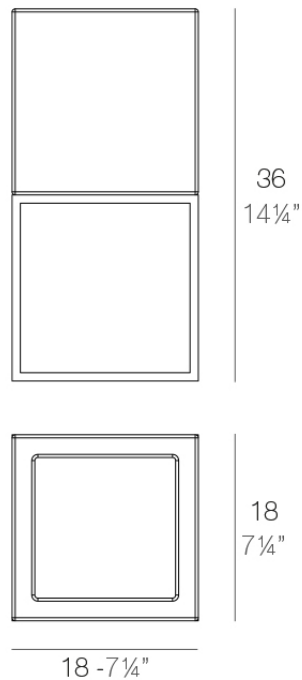
## Info

---

### Description

Pot made of polyethylene resin by rotational moulding. 100% Recyclable. Item suitable for indoor and outdoor use. Available in different finishes.

Weight: 0.4 Kg



VELA Nano Cubo 36 C = 2 L  
VELA Nano Cube 36 C = 1/2 gal

## Finishes

---

### finishes

---

#### Basic

Ref. 54039A



white 2001



black 2002



ecru 2003



tortora 2004



gray 2005



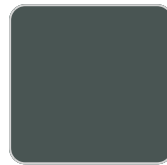
anthracite 2006



brown 2008



garnet 2015



green 2016



cream 2017



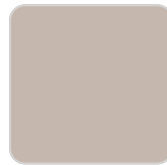
blue 2018



camel 2020



clay 2022



ecru granite



cream granite



ice 2101

#### Matt Polyethylene

#### Lacquered

Ref. 54039F

# VONDOM



white 3101



black 3102



ecru 3103



tortora 3104



gray 3105



anthracite 3106



garnet 3113



green 3116



cream 3117



blue 3118



brown 3125

Lacquered Polyethylene

## lighting

---

Led – White  
Ref. 54039W



ice 2101

White internally lit unit with LED technology. Available only in matte ice white finish.

## estructura

---

Ref. VVAR00483

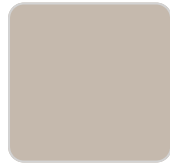
# VONDOM



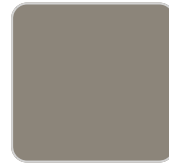
white



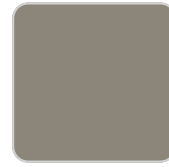
smoked



ecru



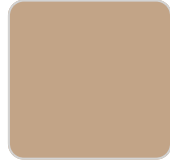
tortora 2004



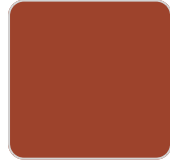
tortora



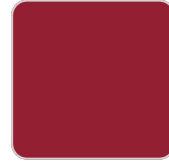
cream



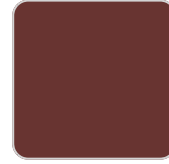
camel



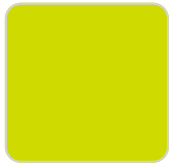
clay



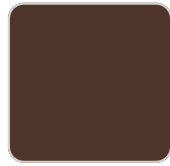
red



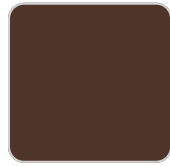
garnet



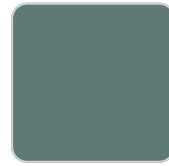
pistachio



brown 2008



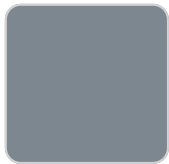
brown



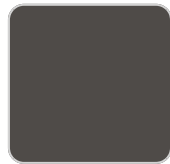
green



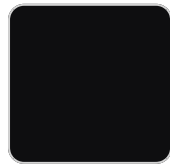
blue



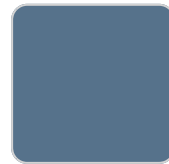
gray



anthracite



black



ocean

## Ambients

---

