

Faz armchair steel base

by Ramón Esteve

A commitment to minimalist aesthetics, Faz is a sleek and contemporary ensemble of outdoor furniture and planters designed by Ramón Esteve for Vondom. Esteve's creative vision for Faz transcends mere functionality and aims to integrate and harmonize with different spaces, be they residential or expansive installations. Through a deliberate selection of materials and the strategic incorporation of lighting elements, Ramón Esteve has created an atmosphere that exudes serenity, timelessness and an universality. His ability to blend form and function creates an immersive experience where the boundaries between indoors and outdoors are blurred, leaving behind only an impression of cohesive elegance. In short, he is the mastermind behind Faz's ambience.

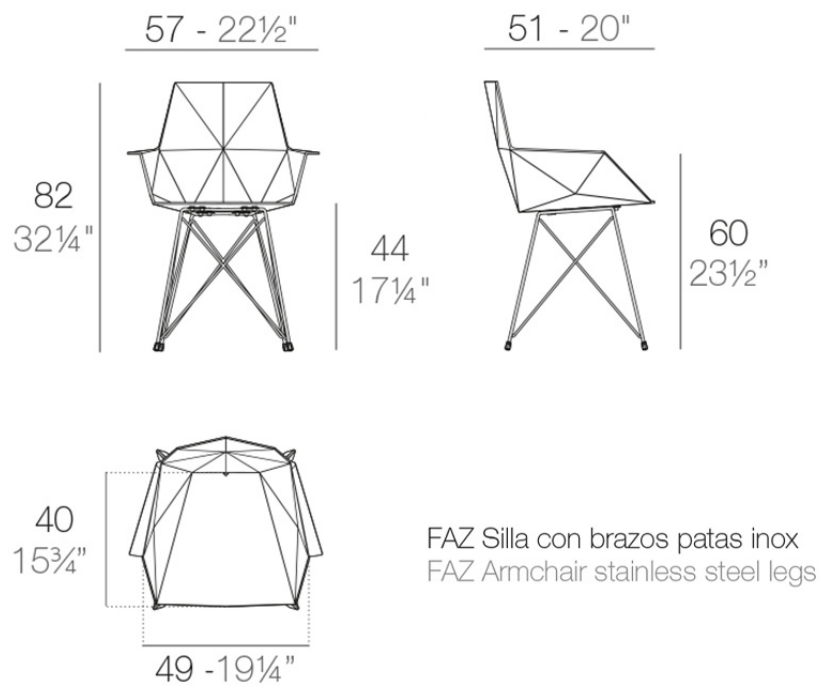


Info

Description

One piece moulded seat and back polypropylene chair. The legs are made in stainless steel with lacquer in a colour to match the seat. Item suitable for indoor and outdoor use.

Weight: 5.03 Kg

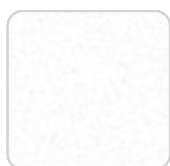


Finishes

finishes

Basic

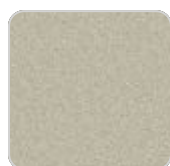
Ref. 54045



white



black



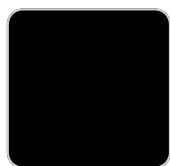
ecru

Available in various colors

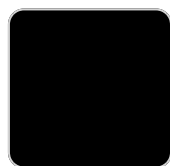
estructura

LEGS

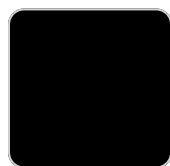
Ref. VVAR00991



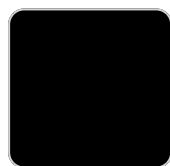
white



gray



black



ecru

fabric

BAIONA

Ref. 54044CO

VONDOM



tortora 10102 baiona



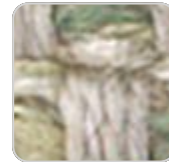
ocean 10111 baiona



green 10110 baiona



ecru 10101 baiona



jade 10109 baiona



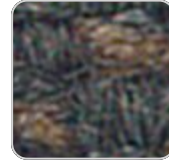
white 10100 baiona



brown 10108 baiona



garnet 10107 baiona



black 10114 baiona



clay 10106 baiona



camel 10104 baiona



gray 10113 baiona



cream 10103 baiona



blue 10112 baiona

Group 1C. High density 100% acrylic fabric, which provides a solid feel. It has an irregular pattern that adds a handcrafted touch.

CALELLA

Ref. 54044CO



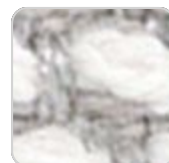
mustard 10124 calella



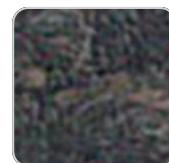
cream 10123 calella



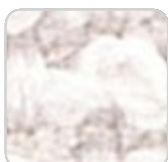
tortora 10122 calella



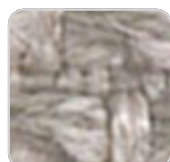
ecru 10121 calella



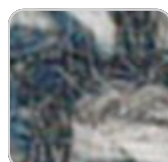
anthracite 10129
calella



white 10120 calella



gray 10128 calella



blue 10127 calella



jade 10126 calella



clay 10125 calella

Group 1C. PFAS-free 100% acrylic fabric with a rich and unusual texture and an exceptional softness, which enhances the comfort of the furniture.

FISTERRA

VONDOM

Ref. 54044CO



cream 10132 fisterra



white 10130 fisterra



ecru 10131 fisterra



tortora 10135 fisterra



camel 10134 fisterra



peach 10146 fisterra



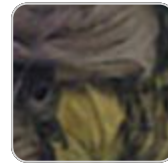
clay 10137 fisterra



garnet 10138 fisterra



brown 10136 fisterra



olive 10145 fisterra



jade 10139 fisterra



green 10140 fisterra



ocean 10141 fisterra



blue 10142 fisterra



gray 10143 fisterra



anthracite 10144
fisterra



black 10147 fisterra

Group 1C. 100% acrylic fabric, with a distinctive irregular marbled pattern and a soft feel.

PORTONOVO

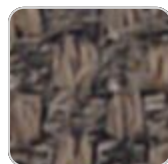
Ref. 54044CO



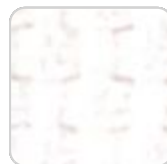
jade 10159 portonovo



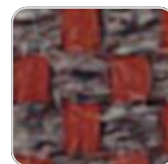
ecru 10151 portonovo



brown 10158
portonovo



white 10150
portonovo



garnet 10157
portonovo



VONDOM

black 10165
portonovo



clay 10156 portonovo



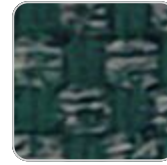
anthracite 10164
portonovo



mustard 10155
portonovo



gray 10163 portonovo



blue 10162 portonovo



camel 10154
portonovo



ocean 10161
portonovo



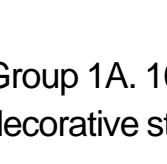
cream 10153
portonovo



green 10160
portonovo



tortora 10152
portonovo



Group 1A. 100% acrylic fabric, with a flat and simple design, which adapts to any decorative style.

ALTEA

Ref. 54044CO



tortora 1102 altea



white 1100 altea



camel 1120 altea



clay 1122 altea



garnet 1106 altea



brown 1104 altea



jade 1125 altea



ocean 1123 altea



gray 1101 altea



anthracite 1124 altea



black 1105 altea

Group 1A. Soft outdoor fabric with leather-like texture.

VONDOM

AROUSA
Ref. 54044CO



tortora 1209 arousa



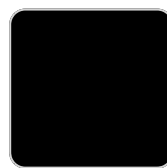
camel 1230 arousa



clay 1231 arousa



brown 1214 arousa



jade 1235 arousa



gray 1208 arousa



anthracite 1210
arousa

Group 1B. Soft outdoor fabric with shiny finish.

Ambients

