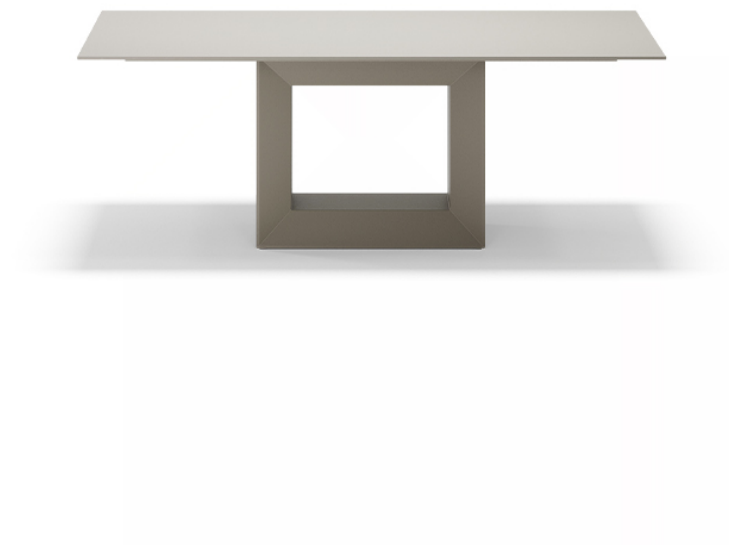


## Vela table 200x100x72

by Ramón Esteve

Vela collection, designed by Ramón Esteve for Vondom, captures the essence of modern design in outdoor living. This collection of contemporary outdoor furniture and planters is crafted to provide exceptional comfort and quality, similar to indoor furnishings, while retaining its distinctive features. With a focus on sleek design, each piece enhances contemporary outdoor furniture and showcases the feeling of modern luxury.

Manufactured in Europe, the Vela collection is an example of superior craftsmanship and innovation. Crafted from the highest quality materials, these pieces are durable and weather resistant, ensuring lasting beauty and functionality. Whether entertaining or enjoying quiet moments, the collection transforms your outdoor space into a sophisticated retreat that perfectly blends modern design with comfort and style.



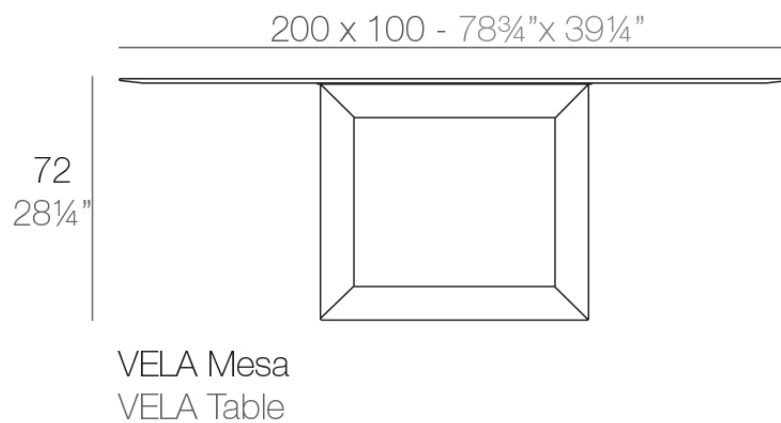
## Info

---

### Description

Made of polyethylene resin by rotational moulding. 100% Recyclable. Item suitable for indoor and outdoor use. Available in different finishes.

Weight: 82.85 Kg



## Finishes

---

### finishes

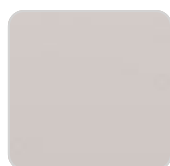
---

HPL Black Edge

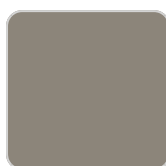
Ref. 54050



white 201



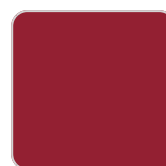
ecru 2003



tortora 2004



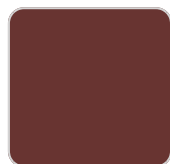
gray 2005



red



brown 2008



garnet 2015



green 2016



cream 2017



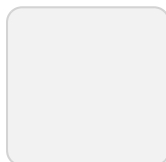
anthracite 2006



blue 2018



black 2002



ice 2101



khaki



beige

Matt Polyethylene

HPL Solid Core

Ref. 54050B



white 201



ecru 2003



tortora 2004



gray 2005

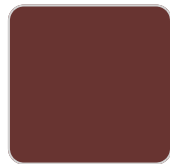


red

# VONDOM



brown 2008



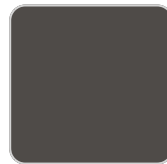
garnet 2015



green 2016



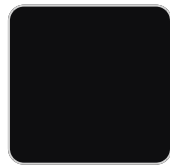
cream 2017



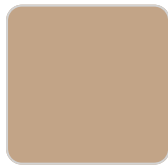
anthracite 2006



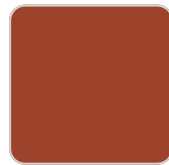
blue 2018



black 2002



camel 2020



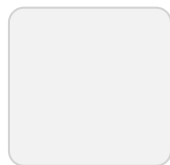
clay 2022



ecru granite



cream granite



ice 2101



khaki



beige

## Matt Polyethylene

### Basic

Ref. 54050FG



ecru 2003



tortora 2004



gray 2005



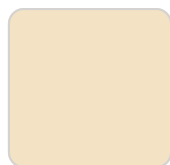
brown 2008



garnet 2015



green 2016



cream 2017



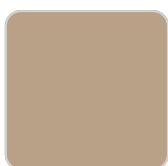
anthracite 2006



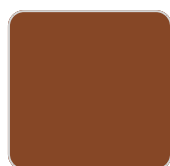
blue 2018



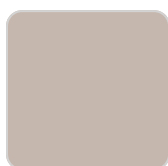
black 2002



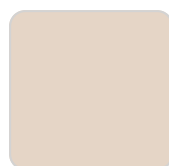
camel 2020



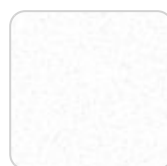
clay 2022



ecru granite



cream granite



white 2001

## Matt Polyethylene Lacquered

Ref. 54050F



white 3101



black 3102



ecru 3103



tortora 3104



gray 3105



anthracite 3106



garnet 3113



green 3116



cream 3117



blue 3118



brown 3125

Lacquered Polyethylene

## lighting

---

Led White

Ref. 54050W



ice 2101

White internally lit unit with LED technology. Available only in matte ice white finish.

Led RGBW

Ref. 54050L



ice 2101

Unit with internal lighting with RGBW LED technology and remote control unit for switching colors. Available only in matte ice white finish. Remote control included.

## Led RGBW DMX

Ref. 54050D



ice 2101

Unit with internal lighting with RGBW LED technology and remote control unit for switching colors. Also controlled by DMX-1024 (wireless), enabling communication between one or more products simultaneously via the DMX transmitter (not included). There are two options to choose from: Professional XLR DMX and Home WIFI DMX. (Remote control included).

Optional battery

## Led RGBW Battery

Ref. 54050Y



ice 2101

Unit with internal lighting with battery-powered RGBW LED technology. Includes charger and remote control for switching colors and charger. Available only in matte ice white finish.

Led RGBW DMX Battery

Ref. 54050DY



ice 2101

Unit with internal lighting with RGBW LED technology and remote control unit for switching colors. Also controlled by DMX-1024 (wireless), enabling communication between one or more products simultaneously via the DMX transmitter (not included). There are two options to choose from: Professional XLR DMX and Home WIFI DMX. (Remote control included).

## tabletops

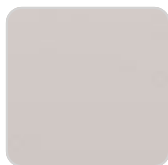
---

HPL Black Edge

Ref. VVAR02176



white(black edge)



ecru(black edge)



black(black edge)



## Ambients

---

