

## Faz table stainless base 100x100x72

by Ramón Esteve

A commitment to minimalist aesthetics, Faz is a sleek and contemporary ensemble of outdoor furniture and planters designed by Ramón Esteve for Vondom. Esteve's creative vision for Faz transcends mere functionality and aims to integrate and harmonize with different spaces, be they residential or expansive installations. Through a deliberate selection of materials and the strategic incorporation of lighting elements, Ramón Esteve has created an atmosphere that exudes serenity, timelessness and an universality. His ability to blend form and function creates an immersive experience where the boundaries between indoors and outdoors are blurred, leaving behind only an impression of cohesive elegance. In short, he is the mastermind behind Faz's ambience.



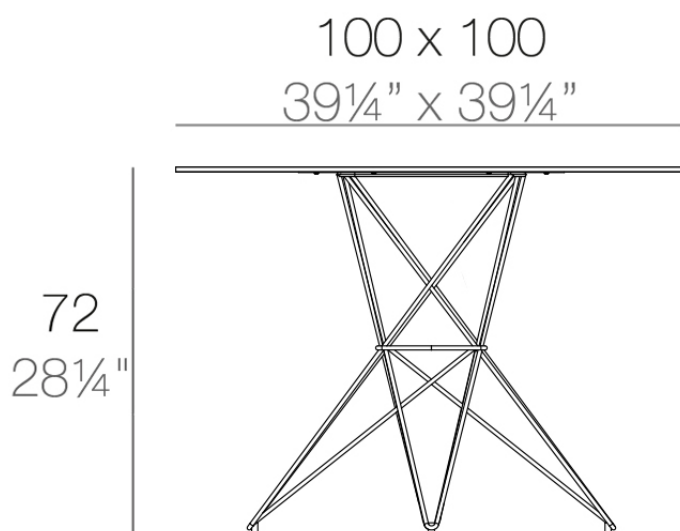
## Info

---

### Description

Made of polyethylene resin by rotational moulding. 100% Recyclable. Item suitable for indoor and outdoor use. Available in different finishes.

Weight: 18.1 Kg



FAZ Mesa Inox 100x100  
FAZ Dining Table Stainless  
Base 39 1/4\"x 39 1/4\"

## Finishes

---

### finishes

---

BASIC

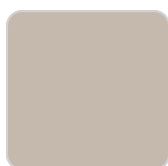
Ref. 54060CB



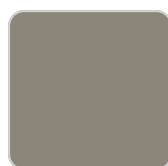
white



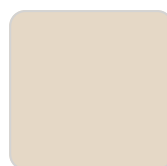
smoked



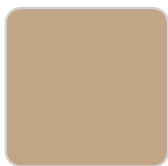
ecru



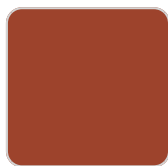
tortora



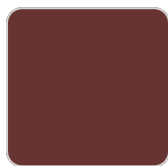
cream



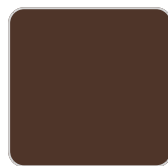
camel 2020



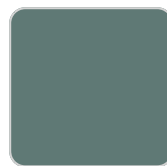
clay 2022



garnet



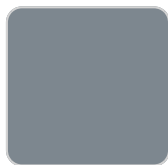
brown



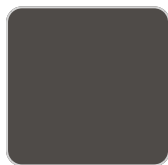
green



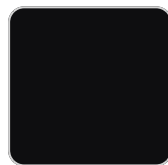
blue



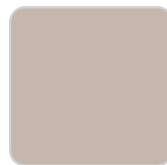
gray



anthracite



black



ecru granite



cream granite

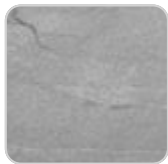
Matt Polyethylene

### tabletops

---

Solid Core

Ref. VVAR00555



gray stone



white stone



smoked



ecru stone



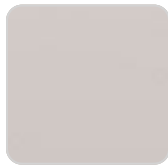
tortora stone



black stone



white (white edge)



ecru



tortora



cream



garnet



brown



green



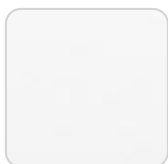
blue



anthracite

## HPL

Ref. VVAR00555



white(black edge)



ecru(black edge)

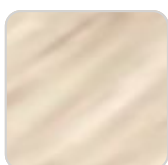


black(black edge)

## HPL black edge

## Solid Core wood

Ref. VVAR00555



oak1



oak2

