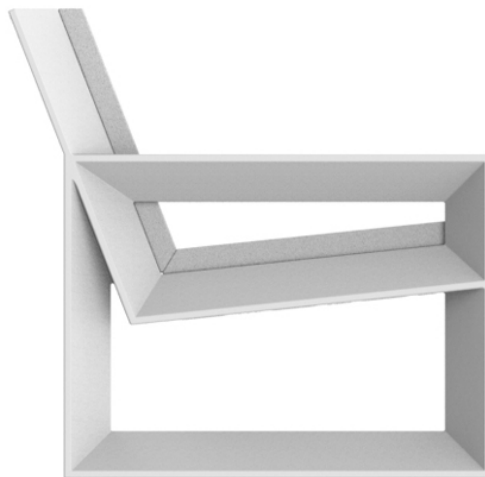


Frame lounge chair

by Ramón Esteve

Frame, outdoor collection by Ramon Esteve, using elementary geometry as a framework, serene and timeless shapes were generated through a process of exploration. The endless possibilities offered by advanced technology and materials served as the inspiration to push boundaries and discover limitless possibilities.

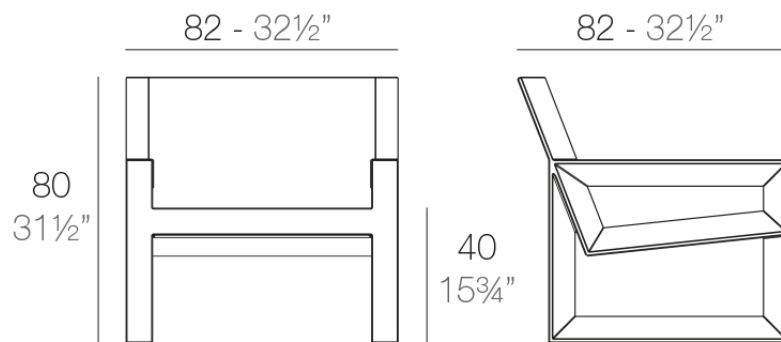


Info

Description

Made of polyethylene resin by rotational moulding. 100% Recyclable. Item suitable for indoor and outdoor use. Available in different finishes.

Weight: 20.6 Kg



FRAME Butaca
FRAME Lounge Chair

Finishes

finishes

Basic

Ref. 54088



white 2001



black 2002



ecru 2003



tortora 2004



gray 2005



anthracite 2006



brown 2008



garnet 2015



green 2016



cream 2017



blue 2018



camel 2020



clay 2022



ecru granite



cream granite



ice 2101

Matt Polyethylene

Lacquered

Ref. 54088F

VONDOM



white 3101



black 3102



ecru 3103



tortora 3104



gray 3105



anthracite 3106



garnet 3113



green 3116



cream 3117



blue 3118

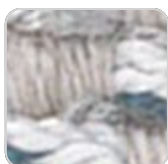


brown 3125

Lacquered Polyethylene

fabric

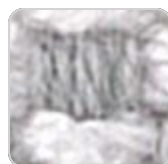
BAIONA Ref. 54088CO



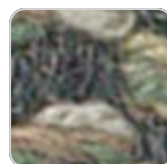
ocean 10111 baiona



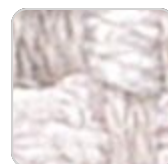
tortora 10102 baiona



ecru 10101 baiona



green 10110 baiona



white 10100 baiona



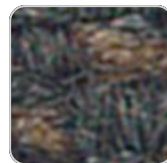
jade 10109 baiona



brown 10108 baiona



garnet 10107 baiona



black 10114 baiona



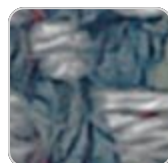
clay 10106 baiona



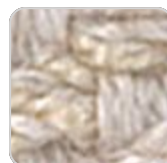
gray 10113 baiona



camel 10104 baiona



blue 10112 baiona



cream 10103 baiona

VONDOM

Group 1C. High density 100% acrylic fabric, which provides a solid feel. It has an irregular pattern that adds a handcrafted touch.

CALELLA

Ref. 54088CO



mustard 10124 calella



cream 10123 calella



tortora 10122 calella



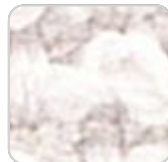
anthracite 10129
calella



ecru 10121 calella



gray 10128 calella



white 10120 calella



blue 10127 calella



jade 10126 calella



clay 10125 calella

Group 1C. PFAS-free 100% acrylic fabric with a rich and unusual texture and an exceptional softness, which enhances the comfort of the furniture.

FISTERRA

Ref. 54088CO



cream 10132 fisterra



white 10130 fisterra



ecru 10131 fisterra



tortora 10135 fisterra



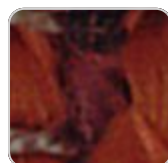
camel 10134 fisterra



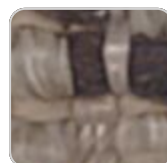
peach 10146 fisterra



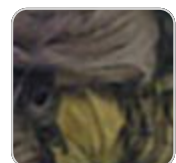
clay 10137 fisterra



garnet 10138 fisterra



brown 10136 fisterra



olive 10145 fisterra

VONDOM



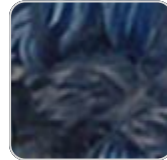
jade 10139 fisterra



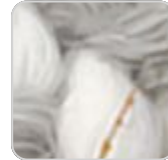
green 10140 fisterra



ocean 10141 fisterra



blue 10142 fisterra



gray 10143 fisterra



anthracite 10144
fisterra



black 10147 fisterra

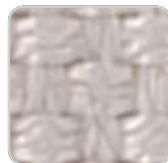
Group 1C. 100% acrylic fabric, with a distinctive irregular marbled pattern and a soft feel.

PORTONOVO

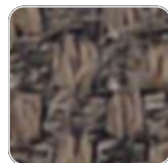
Ref. 54088CO



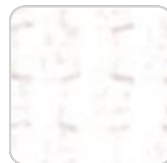
jade 10159 portonovo



ecru 10151 portonovo



brown 10158
portonovo



white 10150
portonovo



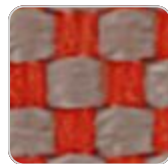
black 10165
portonovo



garnet 10157
portonovo



anthracite 10164
portonovo



clay 10156 portonovo



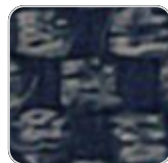
mustard 10155
portonovo



gray 10163 portonovo



camel 10154
portonovo



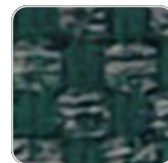
blue 10162 portonovo



cream 10153
portonovo



ocean 10161
portonovo



green 10160
portonovo



tortora 10152
portonovo

VONDOM

Group 1A. 100% acrylic fabric, with a flat and simple design, which adapts to any decorative style.

ALTEA

Ref. 54088CO



tortora 1102 altea



white 1100 altea



camel 1120 altea



clay 1122 altea



garnet 1106 altea



brown 1104 altea



jade 1125 altea



ocean 1123 altea



gray 1101 altea



anthracite 1124 altea



black 1105 altea

Group 1A. Soft outdoor fabric with leather-like texture.

AROUSA

Ref. 54088CO



tortora 1209 arousa



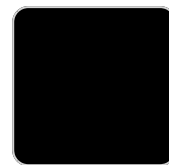
camel 1230 arousa



clay 1231 arousa



brown 1214 arousa



jade 1235 arousa



gray 1208 arousa



anthracite 1210
arousa

VONDOM

Group 1B. Soft outdoor fabric with shiny finish.

Ambients

