

Faz table base h:50cm

by Ramón Esteve

A commitment to minimalist aesthetics, Faz is a sleek and contemporary ensemble of outdoor furniture and planters designed by Ramón Esteve for Vondom. Esteve's creative vision for Faz transcends mere functionality and aims to integrate and harmonize with different spaces, be they residential or expansive installations. Through a deliberate selection of materials and the strategic incorporation of lighting elements, Ramón Esteve has created an atmosphere that exudes serenity, timelessness and an universality. His ability to blend form and function creates an immersive experience where the boundaries between indoors and outdoors are blurred, leaving behind only an impression of cohesive elegance. In short, he is the mastermind behind Faz's ambience.



Info

Description

Extruded aluminum tube with cast aluminum base coated with epoxy baked painting. Item suitable for indoor and outdoor use. Table top not included.

Weight: 3.99 Kg

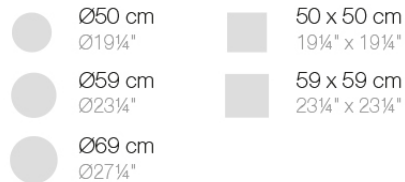
BASE 3 LEGS - BASE 3 PATAS



fixed top / fijo ref. 54125
collapsible top / abatible ref. 54125T
fixed for glass / fijo para vidrio ref. 54125V

FAZ BASE MESA Ø65 H50
FAZ TABLE BASE Ø25 1/2" H19 3/4"

TABLE TOPS OPTIONS - OPCIONES SOBRES



Finishes

finishes

Fixed
Ref. 54125



white



gray



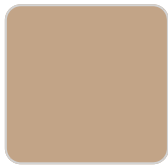
anthracite



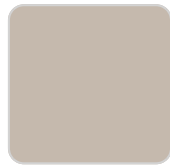
black



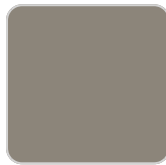
cream



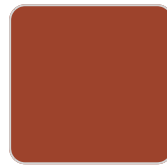
camel



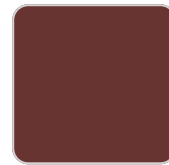
ecu



tortora



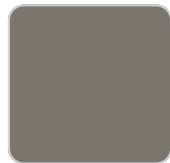
clay



garnet



brown



smoked



green



ocean



blue

Powder coated aluminum base with non collapsable attachment made of polyamide and fiber glass

Collapsible Top
Ref. 54125T



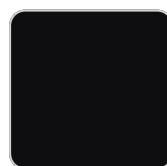
white



gray



anthracite



black

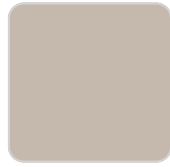


cream

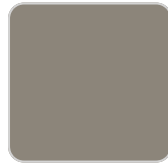
VONDOM



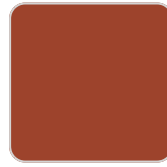
camel



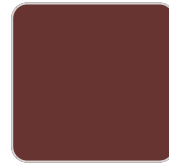
ecru



tortora



clay



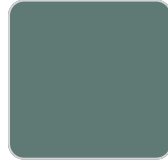
garnet



brown



smoked



green



ocean



blue

Powder coated aluminum base with 90° collapsable attachment made of polyamide and fiber glass

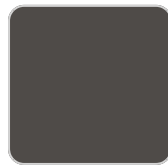
Fixed for glass
Ref. 54125V



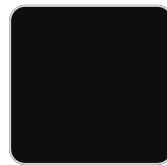
white



gray



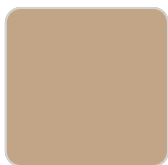
anthracite



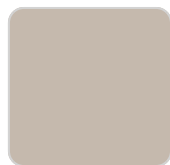
black



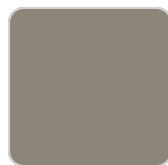
cream



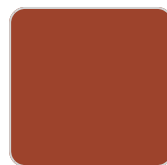
camel



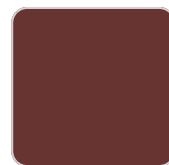
ecru



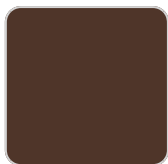
tortora



clay



garnet



brown



smoked



green



ocean



blue

Powder coated aluminum base with non collapsable aluminum attachment powder coated, made exclusively for our glass tops.

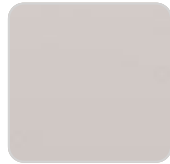
tabletops

HPL Black Edge Top

Ref. 66107



white(black edge)



ecru(black edge)



black(black edge)

HPL Solid Core Top

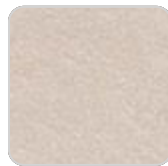
Ref. 66107B



smoked



tortora stone



cream stone



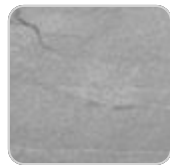
black stone



walnut



green stone



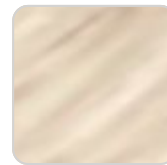
gray stone



ecru stone



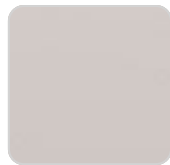
white stone



oak1



white (white edge)



ecru



oak2



tortora



cream



camel



clay



garnet



brown



green



VONDOM

blue

gray

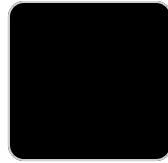
anthracite

ocean

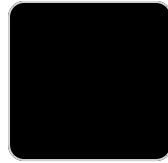
Ref. 66106B



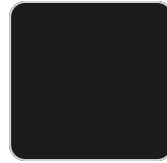
smoked



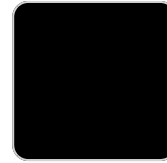
tortora stone



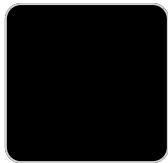
cream stone



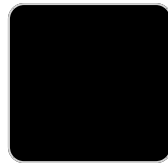
black stone



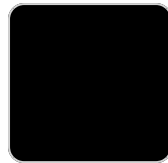
walnut



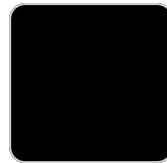
green stone



gray stone



ecru stone



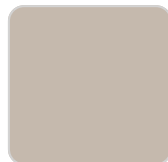
white stone



oak1



white (white edge)



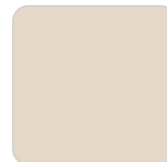
ecru



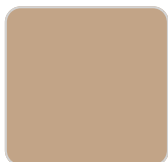
oak2



tortora



cream



camel



clay



garnet



brown



green



blue



gray



anthracite



ocean

Ambients

