

## Faz table base h:73cm

by Ramón Esteve

A commitment to minimalist aesthetics, Faz is a sleek and contemporary ensemble of outdoor furniture and planters designed by Ramón Esteve for Vondom. Esteve's creative vision for Faz transcends mere functionality and aims to integrate and harmonize with different spaces, be they residential or expansive installations. Through a deliberate selection of materials and the strategic incorporation of lighting elements, Ramón Esteve has created an atmosphere that exudes serenity, timelessness and an universality. His ability to blend form and function creates an immersive experience where the boundaries between indoors and outdoors are blurred, leaving behind only an impression of cohesive elegance. In short, he is the mastermind behind Faz's ambience.



## Info

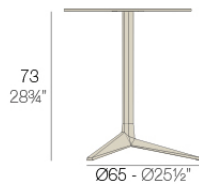
---

### Description

Extruded aluminum tube with cast aluminum base coated with epoxy baked painting. Item suitable for indoor and outdoor use. Table top not included.

Weight: 4.17 Kg

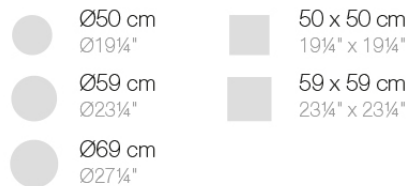
#### BASE 3 LEGS - BASE 3 PATAS



fixed top / fijo ref. 54126  
collapsible top / abatible ref. 54126T  
fixed for glass / fijo para vidrio ref. 54126V

FAZ BASE MESA Ø65 H73  
FAZ TABLE BASE Ø25½" H28¾"

#### TABLE TOPS OPTIONS - OPCIONES SOBRES



## Finishes

---

### finishes

---

Fixed  
Ref. 54126



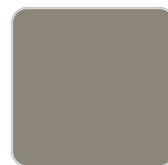
white



smoked



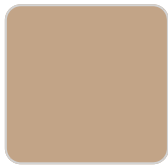
ecru



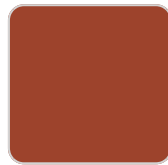
tortora



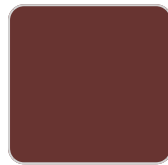
cream



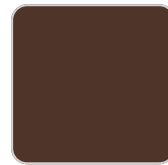
camel



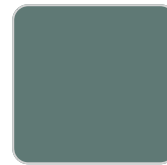
clay



garnet



brown



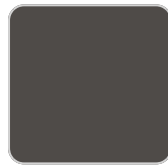
green



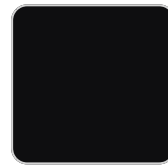
blue



gray



anthracite



black



ocean

Powder coated aluminum base with non collapsable attachment made of polyamide and fiber glass

Collapsible Top  
Ref. 54126T



white



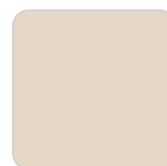
smoked



ecru



tortora



cream

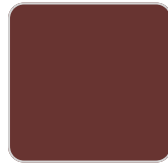
# VONDOM



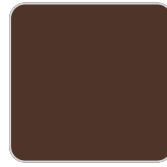
camel



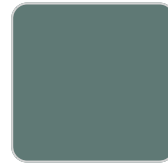
clay



garnet



brown



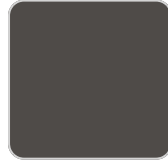
green



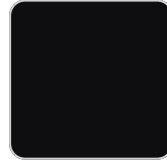
blue



gray



anthracite



black



ocean

Powder coated aluminum base with 90° collapsable attachment made of polyamide and fiber glass

Fixed for glass  
Ref. 54126V



white



smoked



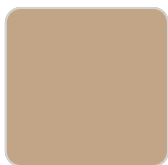
ecru



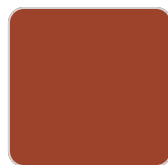
tortora



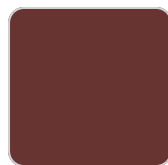
cream



camel



clay



garnet



brown



green



blue



gray



anthracite



black



ocean

Powder coated aluminum base with non collapsable aluminum attachment powder coated, made exclusively for our glass tops.

## tabletops

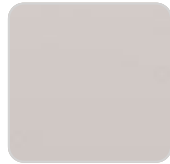
---

### HPL Black Edge Top

Ref. 66107



white(black edge)



ecru(black edge)



black(black edge)

### HPL Solid Core Top

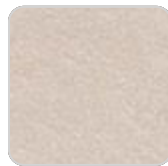
Ref. 66107B



tortora stone



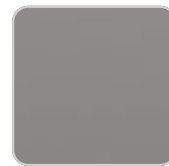
ecru stone



cream stone



white stone



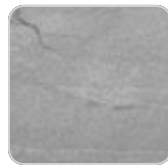
smoked



black stone



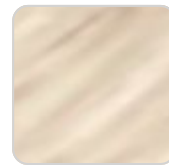
green stone



gray stone



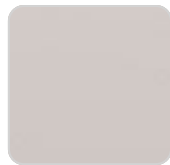
walnut



oak1



white (white edge)



ecru



oak2



tortora



cream



camel



clay



garnet



brown



green



# VONDOM

blue

gray

anthracite

ocean

Ref. 66101

## Ambients

---

