

Faz table base ø80x73h

by Ramón Esteve

A commitment to minimalist aesthetics, Faz is a sleek and contemporary ensemble of outdoor furniture and planters designed by Ramón Esteve for Vondom. Esteve's creative vision for Faz transcends mere functionality and aims to integrate and harmonize with different spaces, be they residential or expansive installations. Through a deliberate selection of materials and the strategic incorporation of lighting elements, Ramón Esteve has created an atmosphere that exudes serenity, timelessness and an universality. His ability to blend form and function creates an immersive experience where the boundaries between indoors and outdoors are blurred, leaving behind only an impression of cohesive elegance. In short, he is the mastermind behind Faz's ambience.

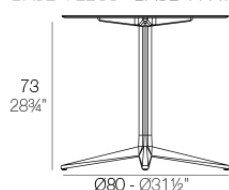


Info

Description

Weight: 5.87 Kg

BASE 4 LEGS - BASE 4 PATAS



fixed top / fijo ref: 54141

fixed for glass / fijo para vidrio ref: 54141V

FAZ BASE MESA Ø80 H73

FAZ TABLE BASE Ø31 1/2" H28 3/4"

TABLE TOPS OPTIONS - OPCIONES SOBRES



Ø79 cm
Ø31"



69 x 69 cm
27 1/4" x 27 1/4"



Ø89 cm
Ø25"



79 x 79 cm
31" x 31"



Ø100 cm
Ø39 1/4"



89 x 89 cm
25" x 25"

Finishes

finishes

ALUMINIUM BASE

Ref. 54141V



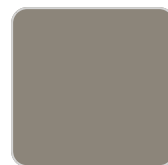
white



smoked



ecru



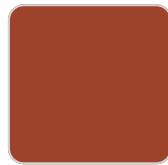
tortora



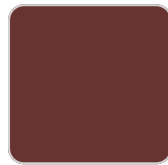
cream



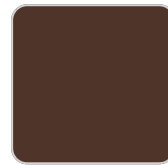
camel



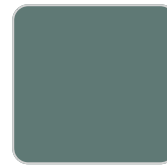
clay



garnet



brown



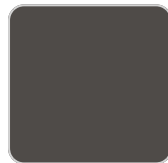
green



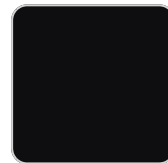
blue



gray



anthracite



black



ocean

Powder coated aluminum base with non collapsable aluminum attachment powder coated, made exclusively for our glass tops.

tabletops

HPL

Ref. 66110



white(black edge)



ecru(black edge)



black(black edge)

HPL black edge

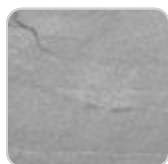
Solid Core
Ref. 66110



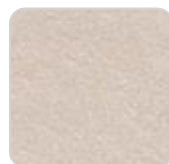
black stone



green stone



gray stone



cream stone



tortora stone



ecru stone



white stone

Solid Core wood
Ref. 66110

TEMPERED GLASS
Ref. 66105

Ref. 66108

Ambients

