

Faz 3-legged double table base

by Ramón Esteve

A commitment to minimalist aesthetics, Faz is a sleek and contemporary ensemble of outdoor furniture and planters designed by Ramón Esteve for Vondom. Esteve's creative vision for Faz transcends mere functionality and aims to integrate and harmonize with different spaces, be they residential or expansive installations. Through a deliberate selection of materials and the strategic incorporation of lighting elements, Ramón Esteve has created an atmosphere that exudes serenity, timelessness and an universality. His ability to blend form and function creates an immersive experience where the boundaries between indoors and outdoors are blurred, leaving behind only an impression of cohesive elegance. In short, he is the mastermind behind Faz's ambience.



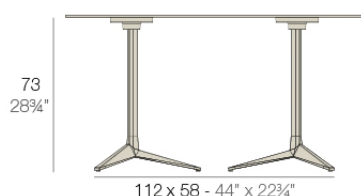
Info

Description

Extruded aluminum tube with cast aluminum base coated with epoxy baked painting. Item suitable for indoor and outdoor use. Table top not included.

Weight: 8.39 Kg

DOUBLE BASE - BASE DOBLE



fixed top / fijo *ref. 54166*

collapsible top / abatible *ref. 54166T*

FAZ BASE DOBLE 112x58 H73

FAZ DOUBLE BASE 44x22 $\frac{3}{4}$ " H28 $\frac{3}{4}$ "

TABLE TOPS OPTIONS - OPCIONES SOBRES



119 x 69 cm
46 $\frac{3}{4}$ " x 27 $\frac{1}{4}$ "

Finishes

finishes

ALUMINIUM BASE

Ref. 54166T



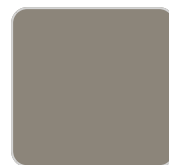
white



smoked



ecru



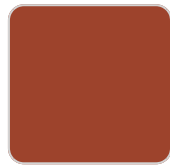
tortora



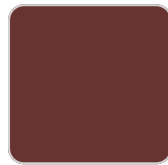
cream



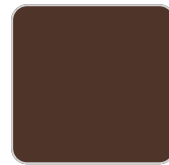
camel



clay



garnet



brown



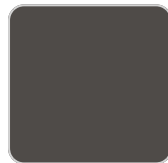
green



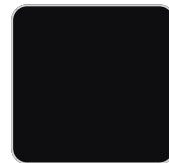
blue



gray



anthracite



black



ocean

Powder coated aluminum base with 90° collapsable attachment made of polyamide and fiber glass

Ambients

