

Quartz dining table ø90

by Ramón Esteve

The Quartz collection of modern chairs and tables, designed by Ramón Esteve for Vondom, has a distinctive appearance characterized by **vertical lines** and triangular profiles. One of its outstanding features is the line of one of its vertices, which creates an impression of lightness, making the furniture seem almost weightless, while still ensuring robust functionality.

Crafted with high quality materials, this modern collection of chairs and tables is perfect for enhancing both indoor and outdoor spaces. With its elegant design and durability, the Quartz collection blends seamlessly into any environment, striking the perfect balance between form and function.

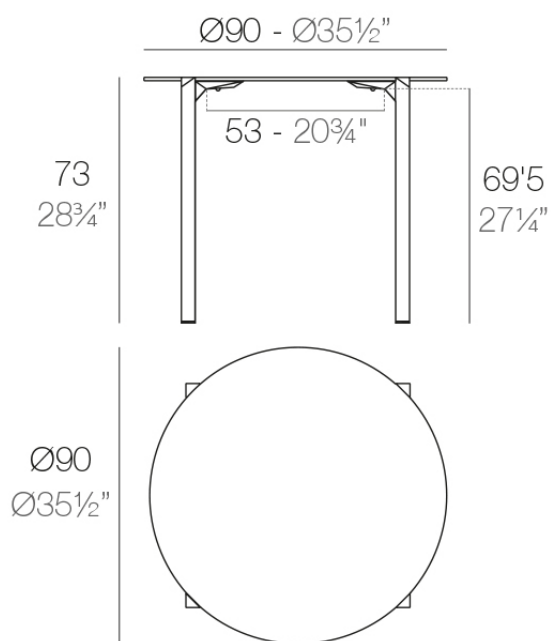


Info

Description

Made from polypropylene and reinforced with fiberglass manufactured by gas injection. Available in various colors. Suitable for indoor and outdoor use.

Weight: 10.8 Kg



QUARTZ Mesa $\varnothing 90$
QUARTZ Table $\varnothing 35 1/2$ "

Finishes

finishes

Basic

Ref. 54201



white



black



ecru

Available in various colors

tabletops

HPL Solid Core

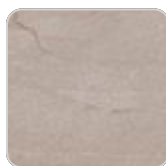
Ref. VVAR02351



white stone



smoked



ecru stone



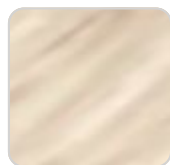
tortora stone



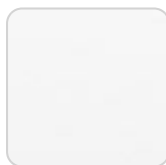
black stone



gray stone



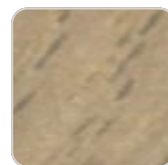
oak1



white (white edge)



ecru



oak2



tortora

cream

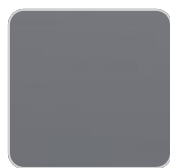
garnet

brown

green



blue



anthracite

HPL Black Edge Ref. VVAR02351



white(black edge)



ecru(black edge)



black(black edge)

