

## Quartz dining table 79x79

by Ramón Esteve

The Quartz collection of modern chairs and tables, designed by Ramón Esteve for Vondom, has a distinctive appearance characterized by **vertical lines** and triangular profiles. One of its outstanding features is the line of one of its vertices, which creates an impression of lightness, making the furniture seem almost weightless, while still ensuring robust functionality.

Crafted with high quality materials, this modern collection of chairs and tables is perfect for enhancing both indoor and outdoor spaces. With its elegant design and durability, the Quartz collection blends seamlessly into any environment, striking the perfect balance between form and function.



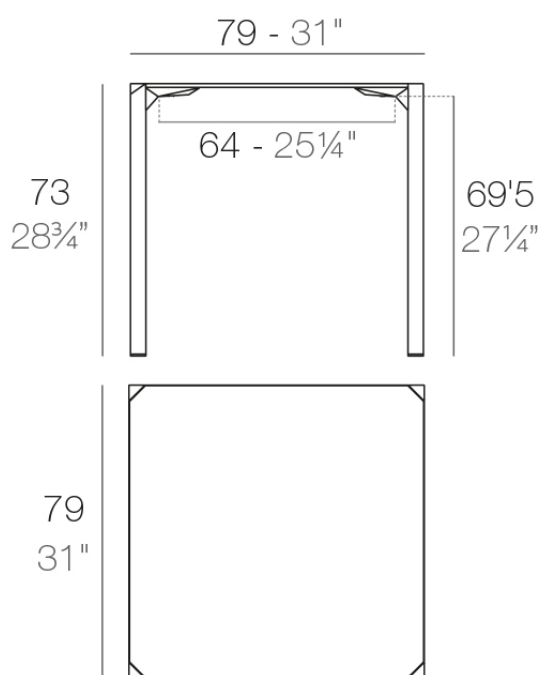
## Info

---

### Description

Made from polypropylene and reinforced with fiberglass manufactured by gas injection. Available in various colors. Suitable for indoor and outdoor use.

Weight: 10.45 Kg



QUARTZ Mesa 79 x 79  
QUARTZ Table 31" x 31"

## Finishes

---

### finishes

---

BASIC PP  
Ref. 54205



white



ecru



black

Available in various colors

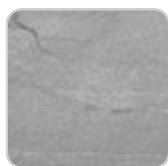
### tabletops

---

Solid Core  
Ref. VVAR02393



black stone



gray stone



cream stone



white stone



green stone



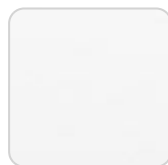
ecru stone



smoked



tortora stone



white (white edge)



ecru



# VONDONM

tortora



brown

cream



green

camel



blue

clay



gray

garnet



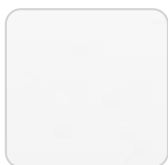
anthracite



ocean

## HPL

Ref. VVAR02393



white(black edge)



ecru(black edge)

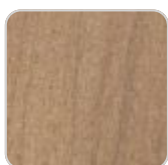


black(black edge)

## HPL black edge

## Solid Core wood

Ref. VVAR02393



walnut



oak1



oak2

