

## Frame aluminium table 100x100x74

by Ramón Esteve

Frame, outdoor collection by Ramon Esteve, using elementary geometry as a framework, serene and timeless shapes were generated through a process of exploration. The endless possibilities offered by advanced technology and materials served as the inspiration to push boundaries and discover limitless possibilities.



## Info

---

### Description

Extruded aluminum with cast lacquered aluminum base. HPL Table top ó Dekton Table top. Item suitable for indoor and outdoor use. HPL Table top.

Weight: 22.92 Kg



FRAME Mesa 100x100cm

FRAME Dinning Table 39 1/4"x39 1/4"



## Finishes

---

### finishes

---

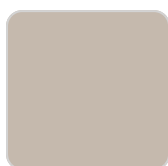
ALUMINIUM  
Ref. 54234FB



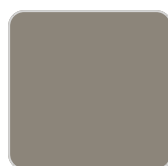
white



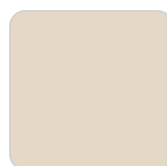
smoked



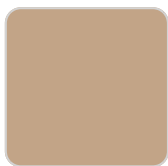
ecru



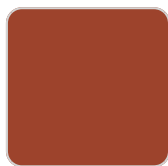
tortora



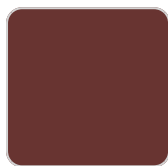
cream



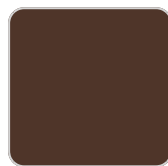
camel



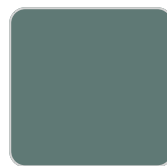
clay



garnet



brown



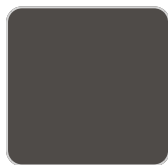
green



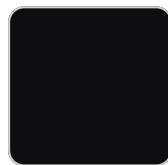
blue



gray



anthracite



black



ocean

Lacquered aluminium profile.

### tabletops

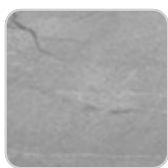
---

Solid Core  
Ref. VVAR02563



# VONDOM

white stone



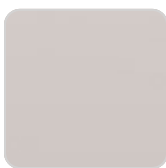
gray stone

smoked



white (white edge)

tortora stone



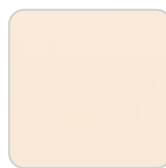
ecru

ecru stone



tortora

black stone



cream



garnet



brown



green



blue



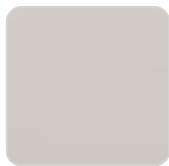
anthracite

## HPL

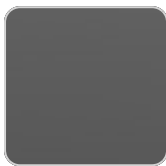
Ref. VVAR02563



white(black edge)



ecru(black edge)



black(black edge)

## HPL black edge

## Ambients

---

