

## Frame aluminium table 300x120x74

by Ramón Esteve

Frame, outdoor collection by Ramon Esteve, using elementary geometry as a framework, serene and timeless shapes were generated through a process of exploration. The endless possibilities offered by advanced technology and materials served as the inspiration to push boundaries and discover limitless possibilities.



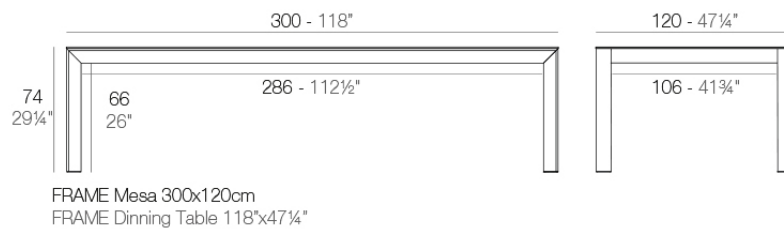
## Info

---

### Description

Extruded aluminum with cast lacquered aluminum base. HPL Table top.  
Item suitable for indoor and outdoor use. HPL Table top.

Weight: 70.7 Kg



## Finishes

---

### finishes

---

HPL Black Edge Top

Ref. 54242F



white



smoked



ecru



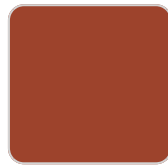
tortora



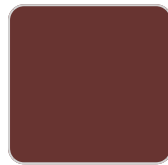
cream



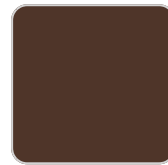
camel



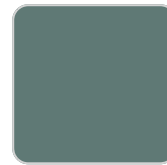
clay



garnet



brown



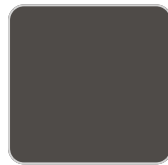
green



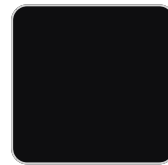
blue



gray



anthracite



black



ocean

Lacquered aluminium profile.

HPL Solid Core Top

Ref. 54242FB



white



smoked



ecru

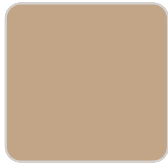


tortora

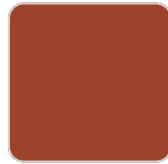


cream

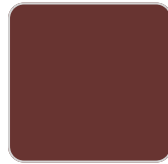
# VONDOM



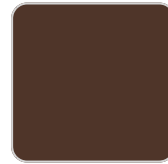
camel



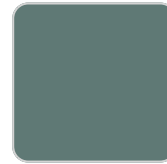
clay



garnet



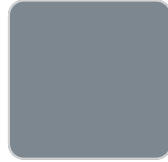
brown



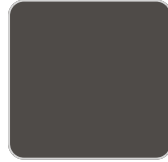
green



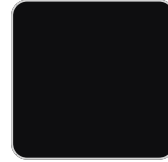
blue



gray



anthracite



black



ocean

Lacquered aluminium profile.

## tabletops

---

Dekton

Ref. 54242FM

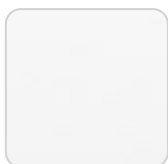
CERAMIC SURFACE

## tabletops

---

HPL Black Edge Top

Ref. VVAR02597



white(black edge)



ecru(black edge)



black(black edge)

HPL Solid Core Top

Ref. VVAR02598

# VONDOM



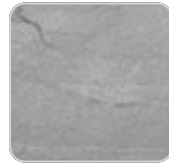
ecru stone



tortora stone



black stone



gray stone



white stone



smoked



white (white edge)



oak1



ecru



oak2



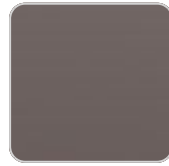
tortora



cream



garnet



brown



green



blue



anthracite

## Ambients

---

