

Frame aluminium table 160x100x32

by Ramón Esteve

Frame, outdoor collection by Ramon Esteve, using elementary geometry as a framework, serene and timeless shapes were generated through a process of exploration. The endless possibilities offered by advanced technology and materials served as the inspiration to push boundaries and discover limitless possibilities.



Info

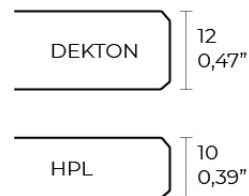
Description

Extruded aluminum with cast lacquered aluminum base. HPL Table top ó Dekton Table top. Item suitable for indoor and outdoor use. HPL Table top.

Weight: 30.91 Kg



FRAME Mesa Baja Aluminio 100 x 160 cm
FRAME Low Table Aluminium Base 39 1/4" x 63"



Finishes

finishes

ALUMINIUM
Ref. 54246FB



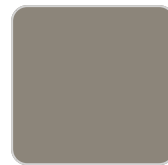
white



smoked



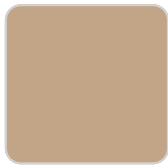
ecru



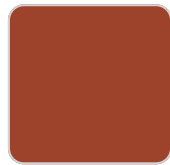
tortora



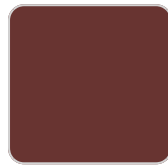
cream



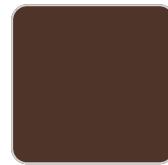
camel



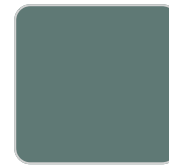
clay



garnet



brown



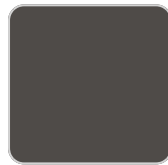
green



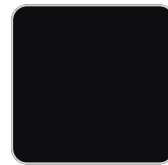
blue



gray



anthracite



black

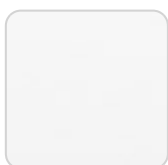


ocean

Lacquered aluminium profile.

tabletops

HPL
Ref. VVAR02593



VONDOM

white(black edge)

ecru(black edge)

black(black edge)

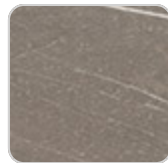
HPL black edge

Solid Core

Ref. VVAR02594



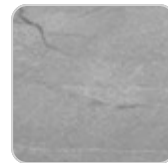
ecru stone



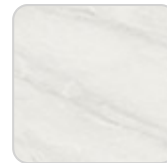
tortora stone



black stone



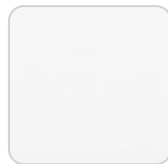
gray stone



white stone



smoked



white (white edge)



ecru



tortora



cream



garnet



brown



green



blue



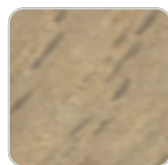
anthracite

Solid Core wood

Ref. VVAR02594



oak1



oak2

Ambients

