

Tablet lounge chair

by Ramón Esteve

The Tablet collection is a modern outdoor sofa designed by Ramon Esteve for Vondom. This exceptional piece of outdoor furniture combines cutting-edge technology with the flexibility and versatility of sectional composition. Emphasizing duality, identity and integration, it stands out in modern spaces. Produced and designed in Europe, it reflects a commitment to quality and innovation that enhances any outdoor environment.

The character of this modern outdoor sofa blends seamlessly with its surroundings, enhancing any space it occupies. Its adaptable design is perfect for a variety of outdoor spaces.



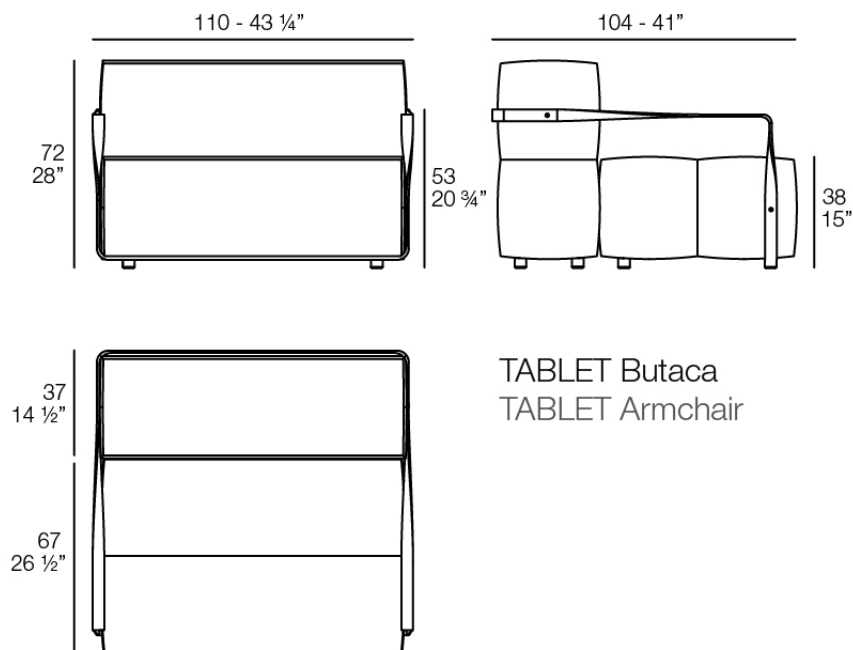
Info

Description

Furniture made of flexible polyurethane injected cold. This material possesses a high resilience and durability.

The flexible polyurethane foam has an open cellular structure, it is a very elastic material. It hinders the growth of fungi and bacteria.

Weight: 42.76 Kg



Finishes

finishes

Polyurethane

Ref. 54319

Furniture made of flexible polyurethane injected cold. This material possesses a high resilience and durability.

estructura

Aluminium

Ref. VVAR03085



white



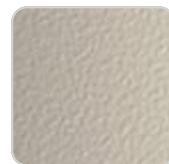
smoked



ecru



tortora



cream



garnet



brown



green



blue



anthracite



black

Ref. VVAR03085



gray

fabric

GETARIA

Ref. 54214T



white 10041 getaria



niord 10015 getaria



moon 10040 getaria



dune 10009 getaria



brown 10050 getaria



terra 10039 getaria



granite 10008 getaria



tortora 10048 getaria



camel 10033 getaria



oasis 10007 getaria



cream 10047 getaria



gallant 10025 getaria



pearl 10006 getaria



blue 10024 getaria



oversea 10002 getaria



garnet 10046 getaria



ocean 10023 getaria



black 10044 getaria



emerald 10016
getaria



anthracite 10043
getaria

Group 2. Premium high density 100% acrylic fabric, available in a wide range of colors.

ZUMAIA

Ref. 54214T

VONDOM



cream 10201 zumaia



white 10200 zumaia



black 10205 zumaia



green 10204 zumaia



blue 10203 zumaia



garnet 10202 zumaia

Group 2. Elegant 100% acrylic fabric, with a soft terry, pleasant to the touch and a unique color combination.

SUANCES

Ref. 54214T



cream 10303 suances



ocean 10311 suances



tortora 10302 suances



green 10310 suances



olive 10317 suances



jade 10309 suances



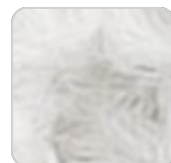
ecru 10301 suances



peach 10316 suances



brown 10308 suances



white 10300 suances



black 10315 suances



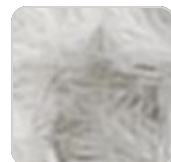
garnet 10307 suances



anthracite 10314
suances



clay 10306 suances



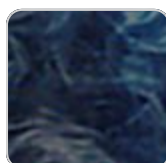
gray 10313 suances



mustard 10305
suances



camel 10304 suances



blue 10312 suances

VONDOM

Group 2. Bocol fabric, which stands out for its warmth and softness, with matching colors that add depth and elegance.

RIBADEO Ref. 54214T



jade 10329 ribadeo



ecru 10321 ribadeo



mint 10337 ribadeo



brown 10328 ribadeo



white 10320 ribadeo



olive 10336 ribadeo



garnet 10327 ribadeo



peach 10335 ribadeo



clay 10326 ribadeo



anthracite 10334
ribadeo



gray 10333 ribadeo



mustard 10325
ribadeo



blue 10332 ribadeo



camel 10324 ribadeo



ocean 10331 ribadeo



cream 10323 ribadeo



green 10330 ribadeo



tortora 10322 ribadeo

Group 2. Soft fabric with marbled yarns of different thicknesses that create a rich and visually interesting texture. Its Linen look adds a touch of natural style.

LOURO Ref. 54214T

VONDOM



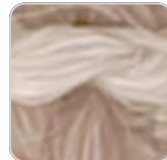
jade 10349 louro



olive 10356 louro



brown 10348 louro



peach 10355 louro



garnet 10347 louro



anthracite 10354 louro



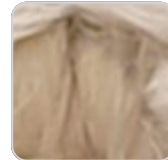
clay 10346 louro



gray 10353 louro



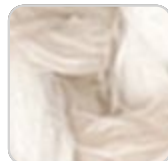
mustard 10345 louro



camel 10344 louro



blue 10352 louro



cream 10343 louro



ocean 10351 louro



tortora 10342 louro



green 10350 louro

Group 2. Soft and versatile fabric, which presents a neutral base color that makes it easy to combine with different colors and fabrics.

Ambients

