

Vineyard dining table legs

by Ramón Esteve

Designed by Ramón Esteve, the Vineyard collection is a testament to the excellence of wooden modern outdoor furniture crafted with a harmonious fusion of aluminum and wood. This collection not only embodies a modern aesthetic, but also exudes a rustic warmth that blends effortlessly into a variety of outdoor spaces.

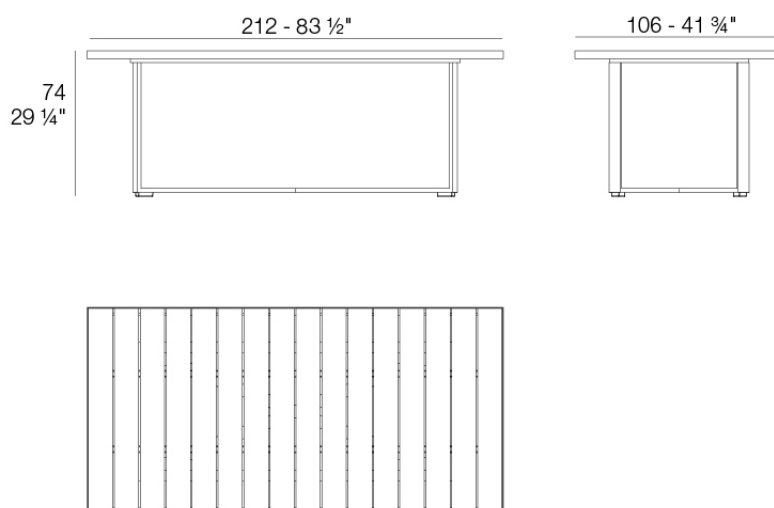
Each piece in the Vineyard collection exemplifies Ramón Esteve's signature craftsmanship and meticulous attention to detail, ensuring both style and durability in outdoor furnishings. Ideal for those who appreciate quality and sophistication, this collection offers a perfect blend of form and function.



Info

Description

Weight: 32 Kg



Versión con patas
Leg version

Finishes

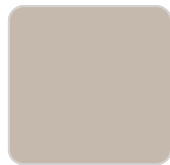
finishes

TEAK FINISH – Natural

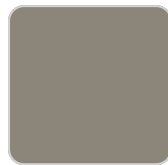
Ref. 54505



cream



ecru



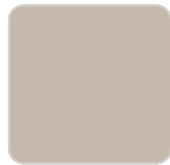
tortora

TEAK FINISH – Weathered

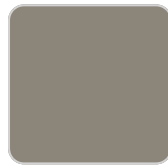
Ref. 54505E



cream



ecru



tortora

Solid Core

Ref. 54505Z



cream



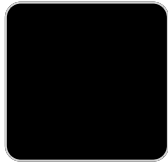
ecru



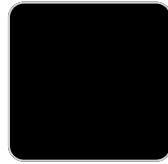
tortora

panel/top

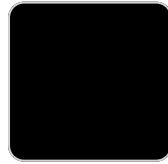
Ref. 54505AA



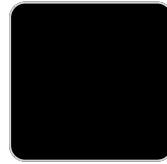
cream stone



green stone



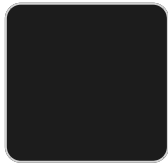
ecru stone



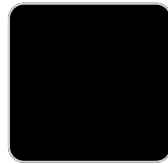
tortora stone



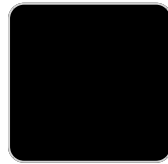
smoked



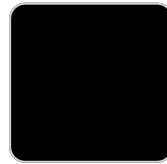
black stone



gray stone



walnut



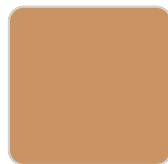
white stone



oak1



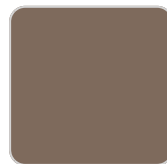
white (white edge)



natural teak



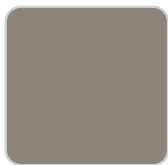
ecru



weathered teak



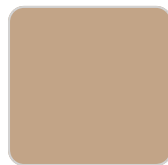
oak2



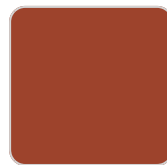
tortora



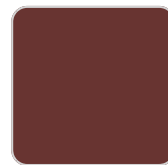
cream



camel



clay



garnet



brown



green



blue



gray



anthracite



ocean

Ambients

