

Vineyard planter legs

by Ramón Esteve

Designed by Ramón Esteve, the Vineyard collection is a testament to the excellence of wooden modern outdoor furniture crafted with a harmonious fusion of aluminum and wood. This collection not only embodies a modern aesthetic, but also exudes a rustic warmth that blends effortlessly into a variety of outdoor spaces.

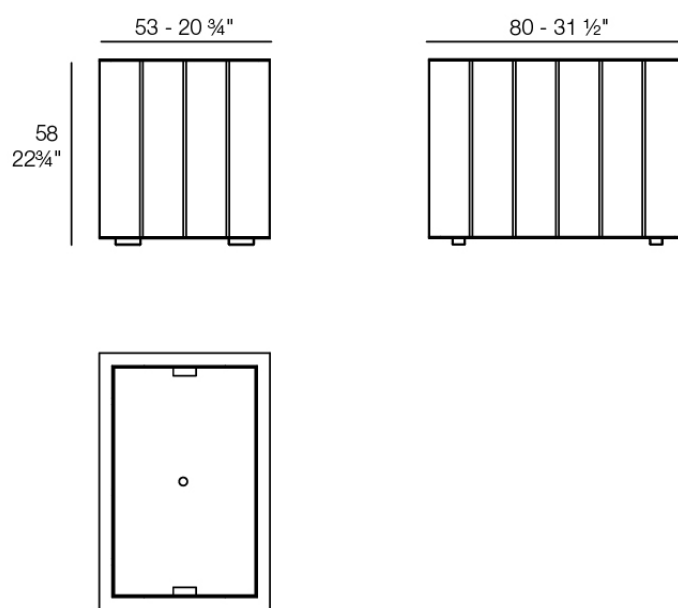
Each piece in the Vineyard collection exemplifies Ramón Esteve's signature craftsmanship and meticulous attention to detail, ensuring both style and durability in outdoor furnishings. Ideal for those who appreciate quality and sophistication, this collection offers a perfect blend of form and function.



Info

Description

Weight: 43.7 Kg



Versión con patas
Leg version

Finishes

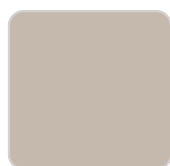
finishes

TEAK FINISH – Natural

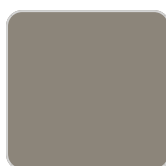
Ref. 54508



cream



ecru



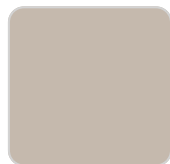
tortora

TEAK FINISH – Weathered

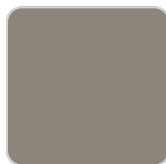
Ref. 54508E



cream



ecru



tortora

Solid Core

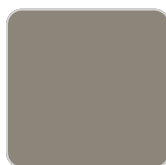
Ref. 54508Z



cream



ecru



tortora

VONDOM

panel/top

Aluminium

Ref. 54508AA



white



anthracite



black



cream



ecru



tortora



garnet



brown



smoked

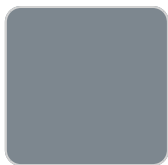


green



blue

Ref. 54508AA



gray

Teak

Ref. 54508AA



natural teak



weathered teak

Ambients

