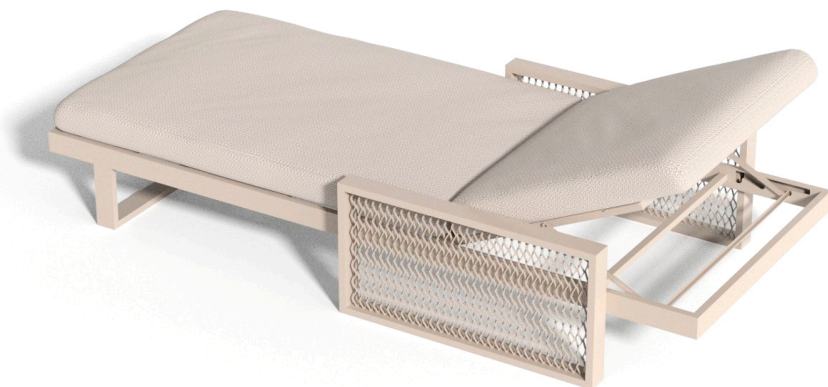


The factory sun lounger

by Ramón Esteve

The Factory collection, designed by Ramón Esteve for Vondom, epitomizes the intersection of cutting-edge design and enduring functionality. Ramón Esteve's meticulous attention to detail is evident in the aluminum profiles and the “deployé” weave technique, setting a new standard for luxury outdoor furniture.

This collection includes a modular sofa, armchair, lounger, side table, lamp, coffee table, high table, chairs and room divider, each piece crafted in Europe to enhance outdoor spaces with elegance and comfort.

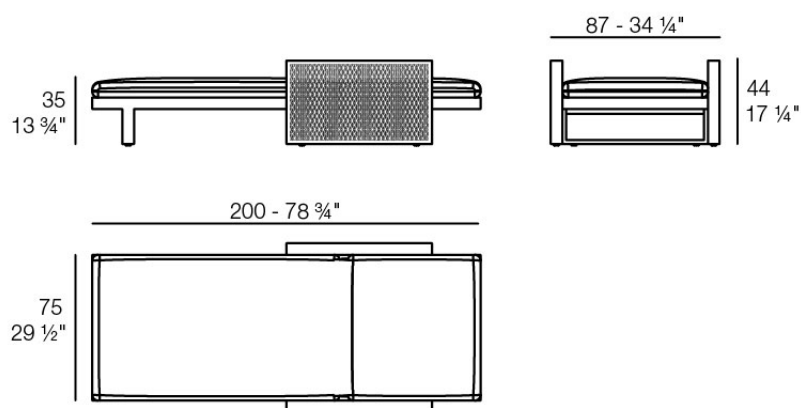


Info

Description

Made from aluminum and with a very comfortable padding. Our fabrics are available in a wide range of colours and very pleasant to touch. This collection is suitable for an indoor and an outdoor use.

Weight: 28.18 Kg



THE FACTORY Tumbona
THE FACTORY Sun Lounger

Finishes

finishes

ALUMINIUM

Ref. 54610

Lacquered aluminium profile.

fabric

GETARIA

Ref. 54610CO

Group 2. Premium high density 100% acrylic fabric, available in a wide range of colors.

BAIONA

Ref. 54610CO

Group 1C. High density 100% acrylic fabric, which provides a solid feel. It has an irregular pattern that adds a handcrafted touch.

CALELLA

Ref. 54610CO

Group 1C. PFAS-free 100% acrylic fabric with a rich and unusual texture and an exceptional softness, which enhances the comfort of the furniture.

FISTERRA

Ref. 54610CO

Group 1C. 100% acrylic fabric, with a distinctive irregular marbled pattern and a soft feel.

PORTONOVO

Ref. 54610CO

Group 1A. 100% acrylic fabric, with a flat and simple design, which adapts to any decorative style.

ZUMAIA

Ref. 54610CO

Group 2. Elegant 100% acrylic fabric, with a soft terry, pleasant to the touch and a unique color combination.

SUANCES

Ref. 54610CO

Group 2. Bocke fabric, which stands out for its warmth and softness, with matching colors that add depth and elegance.

RIBADEO

Ref. 54610CO

Group 2. Soft fabric with marbled yarns of different thicknesses that create a rich and visually interesting texture. Its Linen look adds a touch of natural style.

LOURO

Ref. 54610CO

Group 2. Soft and versatile fabric, which presents a neutral base color that makes it easy to combine with different colors and fabrics.

ALTEA

Ref. 54610CO

Group 1A. Soft outdoor fabric with leather-like texture.

AROUSA

Ref. 54610CO

Group 1B. Soft outdoor fabric with shiny finish.

Ambients

