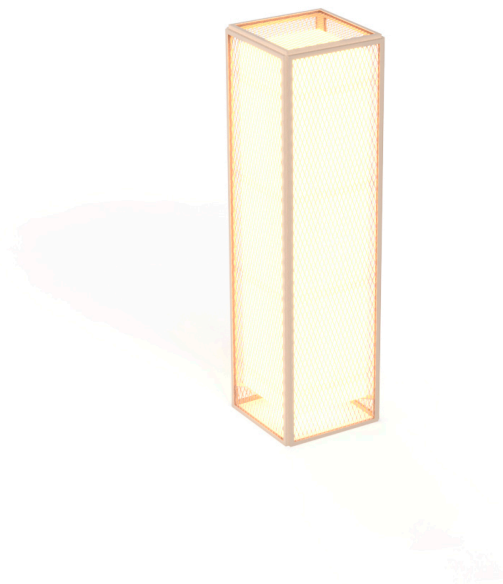


The factory lamp I

by Ramón Esteve

The Factory collection, designed by Ramón Esteve for Vondom, epitomizes the intersection of cutting-edge design and enduring functionality. Ramón Esteve's meticulous attention to detail is evident in the aluminum profiles and the “deployé” weave technique, setting a new standard for luxury outdoor furniture.

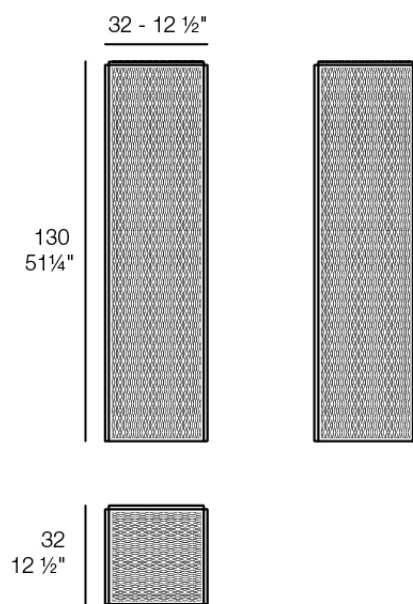
This collection includes a modular sofa, armchair, lounger, side table, lamp, coffee table, high table, chairs and room divider, each piece crafted in Europe to enhance outdoor spaces with elegance and comfort.



Info

Description

Weight: 11.69 Kg



THE FACTORY Lámpara 31x31x120
THE FACTORY Puff S 12¼ x 12¼ x 51¼"

Finishes

finishes

ALUMINIUM

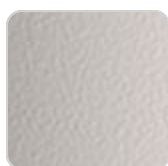
Ref. 54621



white



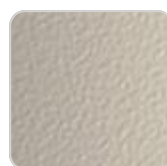
smoked



ecru



tortora



cream



garnet



brown



green



blue



gray



anthracite



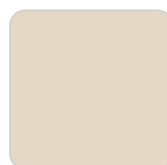
black

Lacquered aluminium profile.

lighting

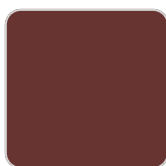
WHITE LED

Ref. 54621W



VONDOM

white



garnet

smoked



brown

ecru



green

tortora



blue

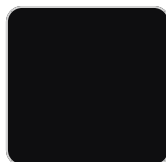
cream



gray



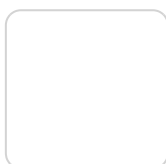
anthracite



black

White internally lit unit with LED technology. Available only in matte ice white finish.

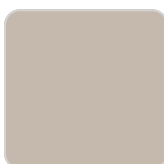
RGBW LED Ref. 54621L



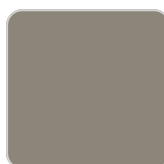
white



smoked



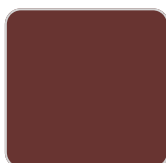
ecru



tortora



cream



garnet



brown



green



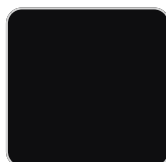
blue



gray



anthracite



black

Unit with internal lighting with RGBW LED technology and remote control unit for switching colors. Available only in matte ice white finish. Remote control included.

RGBW LED DMX

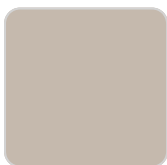
Ref. 54621D



white



smoked



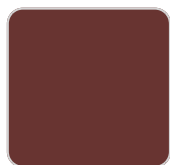
ecru



tortora



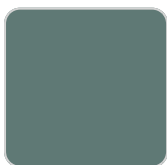
cream



garnet



brown



green



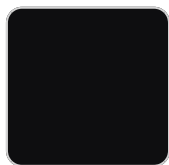
blue



gray



anthracite



black

Unit with internal lighting with RGBW LED technology and remote control unit for switching colors. Also controlled by DMX-1024 (wireless), enabling communication between one or more products simultaneously via the DMX transmitter (not included). There are two options to choose from: Professional XLR DMX and Home WIFI DMX. (Remote control included).

Optional battery

RGBW LED BATTERY

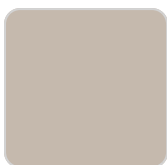
Ref. 54621Y



white



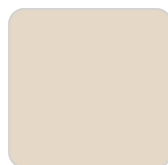
smoked



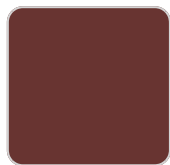
ecru



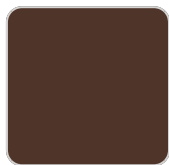
tortora



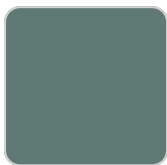
cream



garnet



brown



green



blue



gray



anthracite



black

Unit with internal lighting with battery-powered RGBW LED technology. Includes charger and remote control for switching colors and charger. Available only in matte ice white finish.

RGBW LED DMX BATTERY

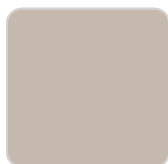
Ref. 54621DY



white



smoked



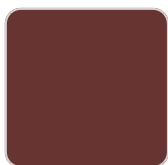
ecru



tortora



cream



garnet



brown



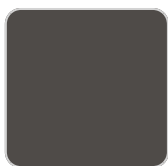
green



blue



gray



anthracite



black

Unit with internal lighting with RGBW LED technology and remote control unit for switching colors. Also controlled by DMX-1024 (wireless), enabling communication between one or more products simultaneously via the DMX transmitter (not included). There are two options to choose from: Professional XLR DMX and Home WIFI DMX. (Remote control included).

Ambients

