

Hamptons dining table

by Ramón Esteve

The **new Hamptons collection** features stunning designer outdoor furniture from Ramón Esteve, meticulously crafted to enhance the outdoor spaces with a lifestyle defined by timeless elegance and sophistication. Through a careful selection of premium fabrics, textures and intricate patterns, each piece invites you to indulge in the finer details of patio decor and outdoor living.

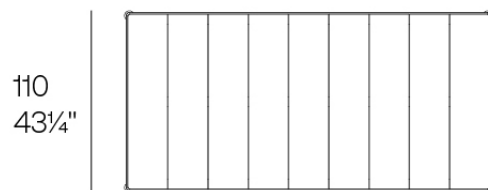
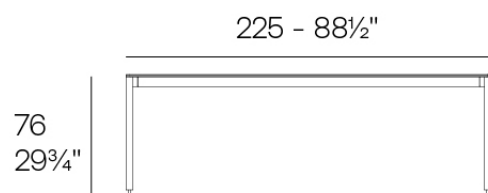
This collection embodies a sense of sophistication and exclusivity that reflects the essence of luxury living, ensuring that every aspect of its design enhances the ambiance of outdoor environments with effortless style, comfort and enduring quality.



Info

Description

Weight: 68 Kg



HAMPTONS Mesa Comedor
HAMPTONS Dining Table

Finishes

finishes

ALUMINIUM

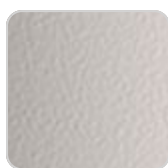
Ref. 54814



white



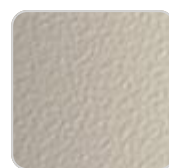
smoked



ecru



tortora



cream



garnet



brown



green



blue



gray



anthracite



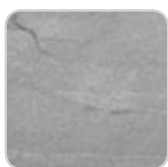
black

Lacquered aluminium profile.

tabletops

Solid Core

Ref. 54814CEN



VONDOM

gray stone



black stone

white stone



white (white edge)

smoked



ecru

ecru stone



tortora

tortora stone



cream



garnet



brown



green



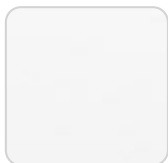
blue



anthracite

HPL

Ref. 54814CEN



white(black edge)



ecru(black edge)

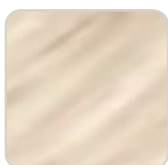


black(black edge)

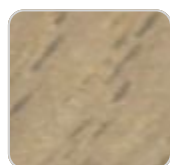
HPL black edge

Solid Core wood

Ref. 54814CEN



oak1



oak2

