

Luna planter ø85x58cm

by Ramón Esteve

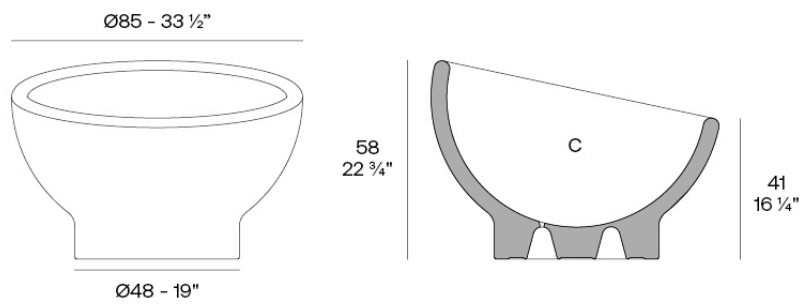
Luna channels the revolutionary spirit of design icons such as Verner Panton and Joe Colombo, known for their influential contributions to outdoor and contemporary furniture. Inspired by their pioneering work, the Luna collection fuses avant-garde materials with bold forms to epitomize the democratization of outdoor furniture, seamlessly blending functionality with striking aesthetics and a timeless elegance that redefines sophistication in contemporary furniture.



Info

Description

Weight: 13 Kg



Luna. Macetero Ø85 cm
Luna. Planter 15 1/2"
54857

C = 78 L
C = 20 1/2 gal

Finishes

finishes

Basic

Ref. 54857



white 2001



black 2002



ecru 2003



tortora 2004



gray 2005



anthracite 2006



brown 2008



garnet 2015



green 2016



cream 2017



blue 2018



camel 2020



clay 2022



ecru granite



cream granite



ice 2101

Matt Polyethylene

Lacquered

Ref. 54857F

VONDOM



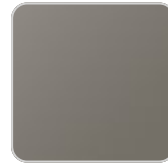
white 3101



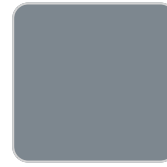
black 3102



ecru 3103



tortora 3104



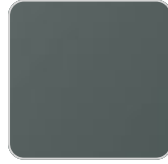
gray 3105



anthracite 3106



garnet 3113



green 3116



cream 3117



blue 3118



camel 3120



clay



brown 3125

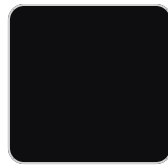
Lacquered Polyethylene

plato

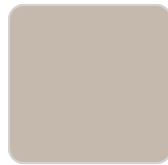
Ref. 42763



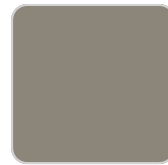
white 2001



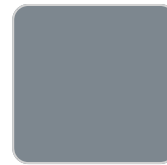
black 2002



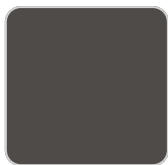
ecru 2003



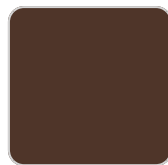
tortora 2004



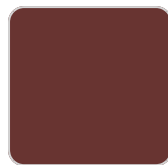
gray 2005



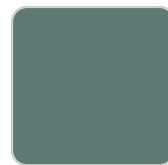
anthracite 2006



brown 2008



garnet 2015



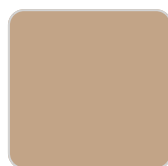
green 2016



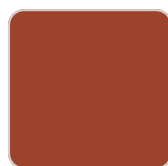
cream 2017



blue 2018



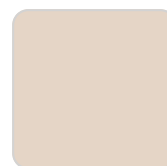
camel 2020



clay 2022



ecru granite



cream granite

VONDOM



ice 2101

