

Stone planter 68x62x30

by Stefano Giovannoni & Elisa Gargan

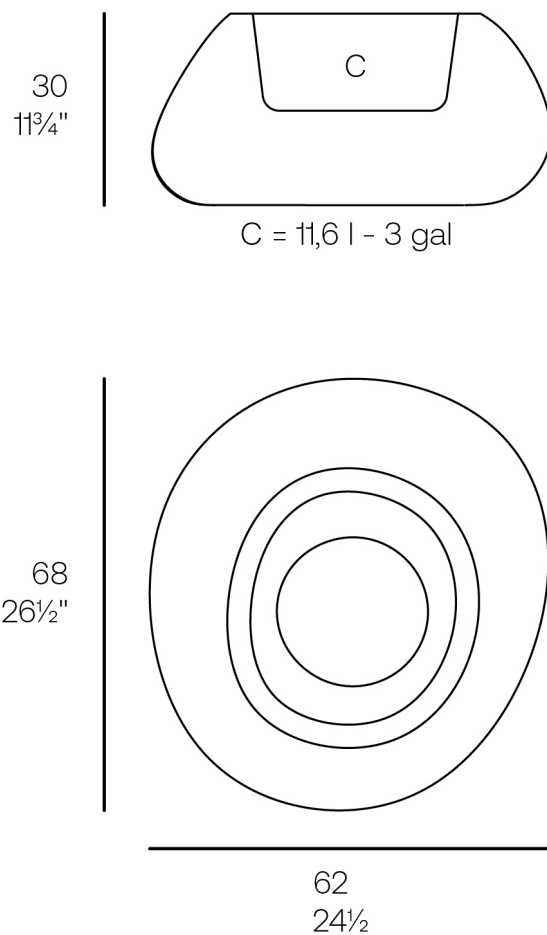
Stone designer outdoor furniture collection, designed by Stefano Giovannoni, impresses with its organic shapes, as if they were naturally formed, hence the name. This collection creates a perfect synergy between natural and artificial landscapes. The stones blend seamlessly into any environment, exuding a unique elegance through their material and shape.



Info

Description

Weight: 5.56 Kg



STONE Macetero 62 x 68 x 30
STONE Planter 24 1/2" x 26 1/2" x 11 3/4"

Finishes

finishes

BASIC

Ref. 55028A



white 2001



ecru 2003



tortora 2004



cream 2017



camel 2020



clay 2022



garnet 2015



brown 2008



green 2016



blue 2018



gray 2005



anthracite 2006



black 2002



ecru granite



cream granite



ice 2101

Matt Polyethylene

SELF-WATERING

Ref. 55028R



white 2001



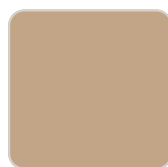
ecru 2003



tortora 2004



cream 2017



camel 2020



clay 2022



garnet 2015



brown 2008



green 2016



blue 2018



gray 2005



anthracite 2006



black 2002



ecru granite



cream granite



ice 2101

Self-watering system included in all planters except those with basic finish

LACQUERED

Ref. 55028F

Lacquered Polyethylene

lighting

WHITE LED

Ref. 55028W

White internally lit unit with LED technology. Available only in matte ice white finish.

RGBW LED

Ref. 55028L

Unit with internal lighting with RGBW LED technology and remote control unit for switching colors. Available only in matte ice white finish. Remote control included.

RGBW LED DMX

Ref. 55028D

Unit with internal lighting with RGBW LED technology and remote control unit for switching colors. Also controlled by DMX-1024 (wireless), enabling communication between one or more products simultaneously via the DMX transmitter (not included). There are two options to choose from: Professional XLR DMX and Home WIFI DMX. (Remote control included).

Optional battery

RGBW LED BATTERY

Ref. 55028Y

Unit with internal lighting with battery-powered RGBW LED technology. Includes charger and remote control for switching colors and charger. Available only in matte ice white finish.

RGBW LED DMX BATTERY

Ref. 55028DY

Unit with internal lighting with RGBW LED technology and remote control unit for switching colors. Also controlled by DMX-1024 (wireless), enabling communication between one or more products simultaneously via the DMX transmitter (not included). There are two options to choose from: Professional XLR DMX and Home WIFI DMX. (Remote control included).

