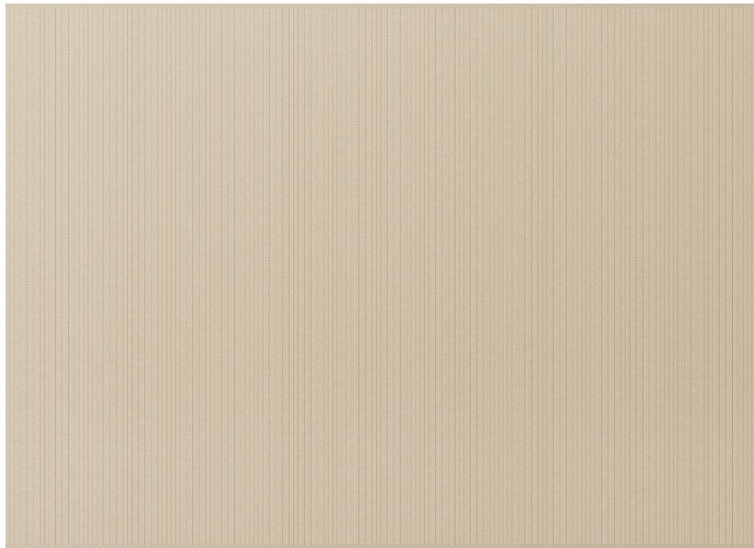


Outdoor rug 350x250cm

by Studio Vondom

At Vondom, we are deeply committed to pushing the boundaries of innovation and continually developing new techniques that redefine the standards of outdoor living. Our relentless pursuit of excellence is evident in our diverse and expansive line of contemporary outdoor rugs, crafted from responsibly sourced **recycled plastic**. Each rug in our collection not only embodies our passion for sustainability, but also exemplifies durability and style, perfect for transforming any outdoor space into a haven of contemporary elegance.



Info

Description

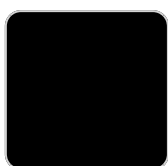
Weight: 27.3 Kg

Finishes

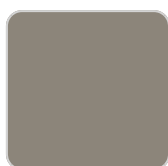
finishes

OUTDOOR RUG

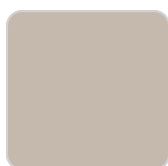
Ref. 62113



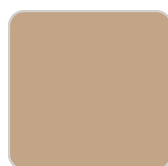
cream-camel



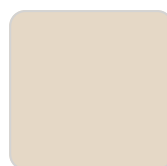
tortora



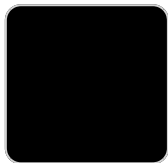
ecru



camel



cream



ecru-tortora

