

Ufo table 200x100x72

by Ora Ĩto

The UFO design furniture collection, designed by Ora Ĩto for Vondom, is the outcome of “genetic mutation experiments” between the iconic languages of pagodas and UFOs. One of its distinctive features is the contrast created by the **negative and positive shapes**.

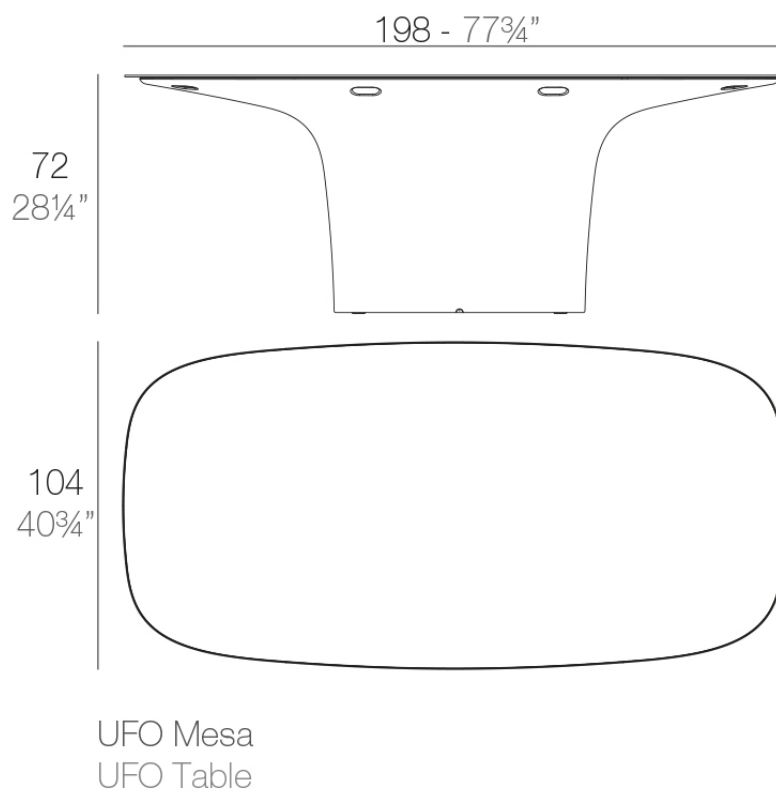


Info

Description

Made of polyethylene resin by rotational moulding. 100% Recyclable. Item suitable for indoor and outdoor use. Available in different finishes.

Weight: 84.82 Kg



Finishes

finishes

Basic

Ref. 63006



white 2001



black 2002



ecru 2003



tortora 2004



gray 2005



anthracite 2006



brown 2008



garnet 2015



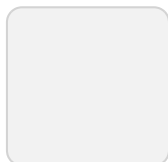
green 2016



cream 2017



blue 2018



ice 2101

Matt Polyethylene

Lacquered

Ref. 63006F



white 3101



black 3102



ecru 3103



tortora 3104



gray 3105



anthracite 3106



garnet 3113



green 3116



cream 3117



blue 3118



brown 3125

Lacquered Polyethylene

lighting

Led White

Ref. 63006W



ice 2101

White internally lit unit with LED technology. Available only in matte ice white finish.

Led RGBW

Ref. 63006L



ice 2101

Unit with internal lighting with RGBW LED technology and remote control unit for switching colors. Available only in matte ice white finish. Remote control included.

Led RGBW DMX Ref. 63006D



ice 2101

Unit with internal lighting with RGBW LED technology and remote control unit for switching colors. Also controlled by DMX-1024 (wireless), enabling communication between one or more products simultaneously via the DMX transmitter (not included). There are two options to choose from: Professional XLR DMX and Home WIFI DMX. (Remote control included).
Optional battery

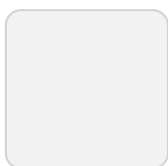
Led RGBW Battery Ref. 63006DYB



ice 2101

Unit with internal lighting with battery-powered RGBW LED technology. Includes charger and remote control for switching colors and charger. Available only in matte ice white finish.

Led RGBW DMX Battery Ref. 63006DY



ice 2101

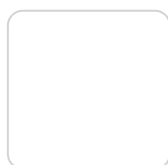
Unit with internal lighting with RGBW LED technology and remote control unit for

switching colors. Also controlled by DMX-1024 (wireless), enabling communication between one or more products simultaneously via the DMX transmitter (not included). There are two options to choose from: Professional XLR DMX and Home WIFI DMX. (Remote control included).

tabletops

HPL Solid Core

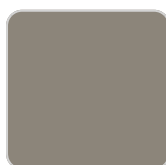
Ref. 63006B



white 201



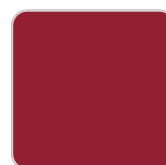
ecru 2003



tortora 2004



gray 2005



red



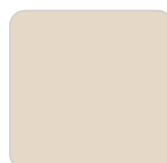
brown 2008



garnet 2015



green 2016



cream 2017



anthracite 2006



black 2002



blue 2018



khaki



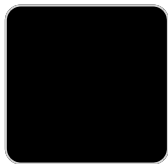
beige

HPL solid core

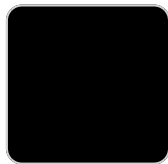
tabletops

HPL Solid Core

Ref. VVAR02052



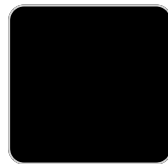
cream stone



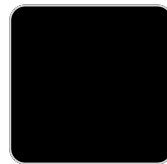
green stone



walnut



ecru stone



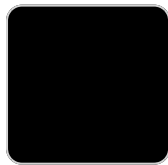
tortora stone



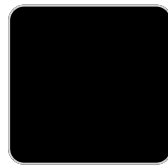
smoked



black stone



gray stone



white stone



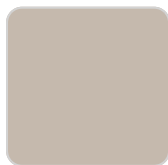
oak1



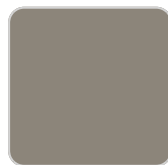
white (white edge)



oak2



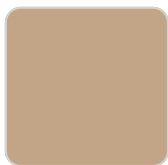
ecru



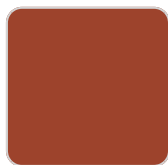
tortora



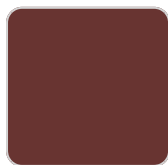
cream



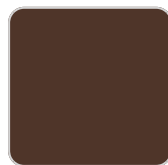
camel



clay



garnet



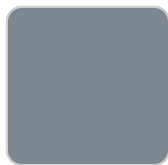
brown



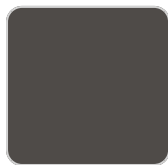
green



blue



gray

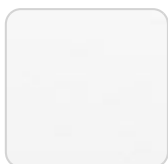


anthracite



ocean

HPL Black Edge Ref. VVAR02052



white(black edge)



ecru(black edge)



black(black edge)

Ambients

