

## Mari-sol table base h:105cm

by Eugeni Quitllet

Created by designer Eugeni Quitllet for Vondom, the Mari-sol collection embodies a harmonious blend of form and function, presenting a masterpiece of contemporary design that seamlessly **blends technological innovation with captivating aesthetics**. At its core is a stunning designer table that serves as the centerpiece of outdoor spaces, captivating the senses with its seductive allure and timeless elegance. This collection redefines the essence of outdoor living, offering a symphony of style and sophistication that transcends boundaries. The Mari-sol table and its companion pieces are the ideal choice for enhancing patios and terraces around the globe, transforming any outdoor space into a luxurious retreat. With its thoughtful design and modern appeal, the Mari-sol collection transforms everyday moments into extraordinary experiences, inviting people to enjoy the beauty of outdoor living.



## Info

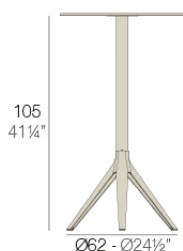
---

### Description

Extruded aluminum tube with cast aluminum base coated with epoxy baked painting. Item suitable for indoor and outdoor use. Table top not included.

Weight: 3.84 Kg

BASE 3 LEGS - BASE 3 PATAS



fixed top / fijo ref: 65011

collapsible top / abatible ref: 65011T

fixed for glass / fijo para vidrio ref: 65011V

MARI-SOL BASE MESA Ø62 H105

MARI-SOL TABLE BASE Ø24 1/2" H41 1/4"

TABLE TOPS OPTIONS - OPCIONES SOBRES



Ø50 cm

Ø19 1/4"



50 x 50 cm

19 1/4" x 19 1/4"



Ø59 cm

Ø23 1/4"



59 x 59 cm

23 1/4" x 23 1/4"

## Finishes

---

### finishes

---

Fixed

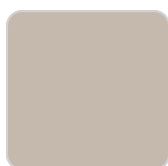
Ref. 65011



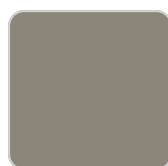
white



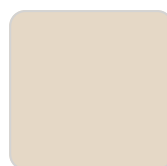
smoked



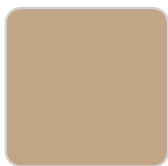
ecru



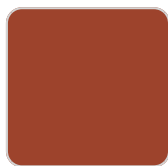
tortora



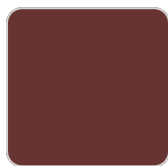
cream



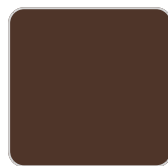
camel



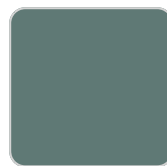
clay



garnet



brown



green



blue



gray



anthracite



black



ocean

Powder coated aluminum base with non collapsable attachment made of polyamide and fiber glass

Top Abatible

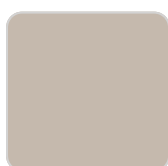
Ref. 65011T



white



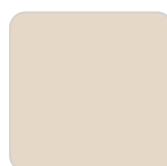
smoked



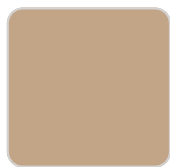
ecru



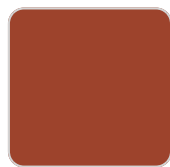
tortora



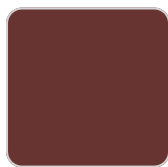
cream



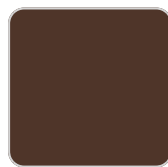
camel



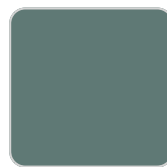
clay



garnet



brown



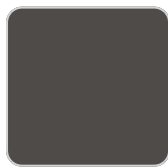
green



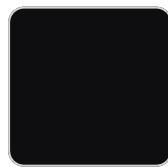
blue



gray



anthracite



black



ocean

Powder coated aluminum base with 90° collapsable attachment made of polyamide and fiber glass

Fixed for glass  
Ref. 65011V



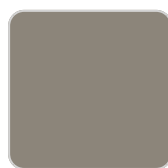
white



smoked



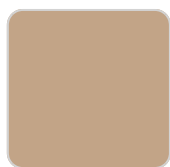
ecru



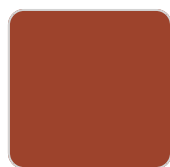
tortora



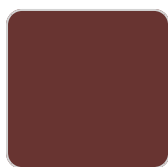
cream



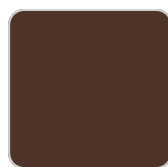
camel



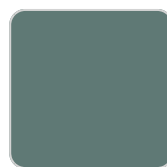
clay



garnet



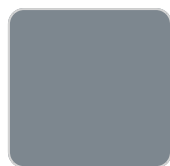
brown



green



blue



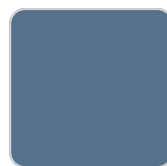
gray



anthracite



black



ocean

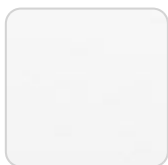
Powder coated aluminum base with non collapsable aluminum attachment powder coated, made exclusively for our glass tops.

## tabletops

---

### HPL Black Edge

Ref. 66107



white(black edge)



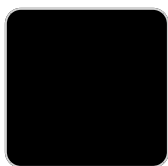
ecru(black edge)



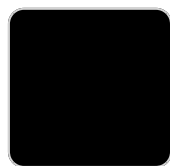
black(black edge)

### HPL Solid Core

Ref. 66107B



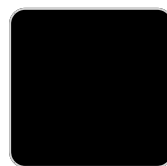
gray stone



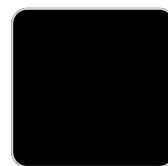
cream stone



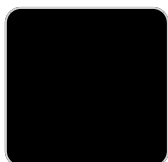
black stone



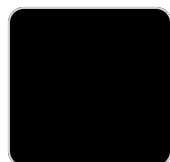
tortora stone



green stone



white stone



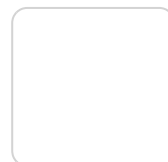
ecru stone



walnut



smoked



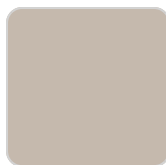
white (white edge)



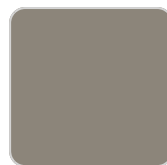
oak1



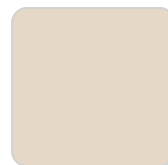
oak2



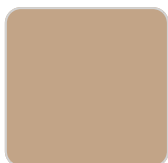
ecru



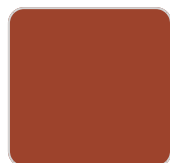
tortora



cream



camel



clay



garnet



brown



green



blue

gray

anthracite

ocean

Ref. 66101

## Ambients

---

